

PINTDECOR®

wallpaper

made in italy





ADRIA ART presenta l'esclusiva collezione
di carta da parati firmata PINTDECOR

L'alta qualità delle materie prime
e l'innovativa capacità creativa
dei nostri designer
si intrecciano nello stile unico
che caratterizza il marchio

*ADRIA ART presents the exclusive
wallpaper collection branded PINTDECOR*

*The high quality of the raw materials
and the innovative creative ability
of our designers
are mingled with the unique style
that distinguishes our brand*

LE NOSTRE CARTE DA PARATI
OUR WALLPAPERS

P. 6-7

SERVIZI EXTRA: PERSONALIZZAZIONE
EXTRA SERVICES: CUSTOMIZATION

P. 8-9

Index

INDICE FOTOGRAFICO
PHOTO INDEX

P. 231-246

INDICE PER ARTICOLO
PHOTO INDEX

P. 231-246

CONSIGLI UTILI: COME ORDINARE
E POSARE LE NOSTRE CARTE
USEFUL TIPS: HOW TO ORDER
AND INSTALL OUR WALLPAPERS

P. 246-247

PINTDECOR®
wallpaper
made in italy

Leaves

CIRCONDATI DALLA NATURA
NATURE ALL AROUND



P. 10-43

Flowers design

SBOCCIA LA NATURA
THE WALL BLOWS



P. 44-71

Grafica

ARTE MURALE
MURAL ART



P. 128-139

Geometrie

LINEE MORBIDE. LINEE RETTE. 3D
SOFT LINES. STRAIGHT LINES. 3D



P. 140-165

Righe

RAFFINATE COMBINAZIONI
REFINED COMBINATIONS



P. 72-89

Animals

LA PARETE PRENDE VITA
THE WALL COMES ALIVE



P. 90-99

Gold

PARETI CHE BRILLANO
SHINING WALLS



P. 166-173

Materials effect

MATERIALI IMPRESSI SUL MURO
MATERIALS PRINTED ON WALL



P. 174-199

Black&white

ELEGANTI CONTRASTI
REFINED CONTRASTS



P. 100-115

Letters

GRAFIA A PARETE
GRAPHIC WALL



P. 116-127

Landscapes

PROSPETTIVE MURALI
MURAL PERSPECTIVES



P. 200-213

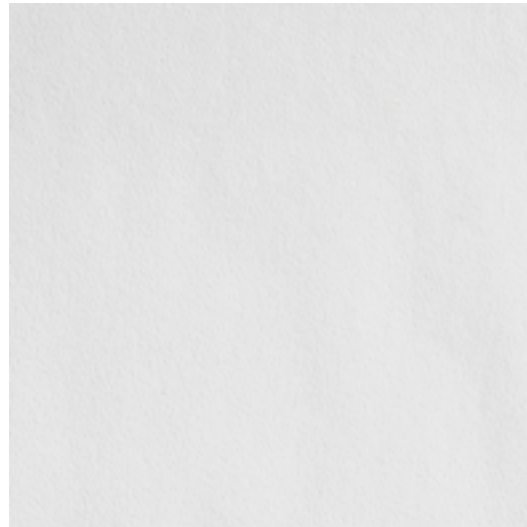
Kids

PARETI DA SOGNO
DREAMING WALL



P. 214-227

CLASSIC eco-friendly



Superficie strutturata e opaca con grana impercettibile

Carta da parati in tnt di cellulosa da 225 g/mq
Facile da applicare e da rimuovere
Qualità di stampa fotorealistica
Indeformabile, non arriccias
Buona resistenza ai graffi
Solo per uso interno
Retro in tnt green (tessuto non tessuto ecologico)
Certificazione europea di resistenza al fuoco en 13501
Ideale per interior design di abitazioni e locali commerciali.

Carta totalmente pvc-free ed ecologica, ricavata da cellulosa certificata fsc

Textured and opaque surface with imperceptible grain

*TNT cellulose wallpaper, weight 225 g/m2
Easy application and easy removal
Photorealistic print quality
Crushproof, no wrinkles
Good scratch resistance
For internal use only
TNT Green back (ecological non-woven fabric)
Fire resistance according to EN 13501 European certification
Suitable for interior design of homes and commercial premises*

Totally PVC-FREE and eco-friendly wall paper, obtained from FSC certified cellulose

+ ZOOM



WALL



Superficie con realistico effetto muro ad intonaco a stucco

Carta da parati coatizzata in PVC da 295 gr/mq
Ottima qualità di stampa e veloce periodo di asciugatura
Facile da applicare e da rimuovere
Buona resistenza ai graffi
Solo per uso interno
Retro in carta
Certificazione europea di resistenza al fuoco EN 13501 e B1
Ideale per interior design di abitazioni e locali commerciali

Surface with realistic plaster-like wall effect

*One side PVC coated wallpaper, weight 295 g/m2
Excellent print quality and fast drying time
Easy to install and remove
Good scratch resistance
For internal use only
Paper backside
Fire resistance according to European certification EN 13501 and B1
Ideal for interior design of homes and commercial premises*

+ ZOOM



LINEN



Superficie con elegante effetto di tessuto in lino

Carta da parati coatizzata in PVC da 295 gr/mq
Ottima qualità di stampa e veloce periodo di asciugatura
Facile da applicare e da rimuovere.
Buona resistenza ai graffi
Solo per uso interno
Retro in carta
Certificazione europea di resistenza al fuoco EN 13501 e B1
Ideale per interior design di abitazioni e locali commerciali

Surface with elegant linen fabric effect

*One side PVC coated wallpaper, weight 295 g/m2
Excellent print quality and fast drying time*

Easy to install and remove

Good scratch resistance

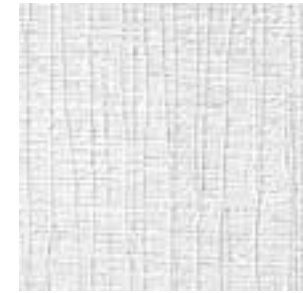
For internal use only

Paper backside

Fire resistance according to European certification EN 13501 and B1

Ideal for interior design of homes and commercial premises

+ ZOOM



DUNE



Superficie con effetto muro rigato, il frontale spalmato multistrato consente effetti a rilievo in grado di simulare l'intonaco

Carta da parati coatizzata in PVC da 300g/mq
Ottima qualità di stampa e veloce periodo di asciugatura
Facile da applicare e da rimuovere
Buona resistenza ai graffi
Solo per uso interno
Retro in carta
Certificazione europea di resistenza al fuoco
EN 13501-1:2007-B-s2,d0
Ideale per interior design di abitazioni e locali commerciali

Surface with striped wall effect, the multilayer coated front side enables embossed effects like a plaster

*One side PVC coated wallpaper, weight 300g/m2
Excellent print quality and fast drying time*

Easy to install and remove

Good scratch resistance

For internal use only

Paper backside

Fire resistance according to European certification

EN 13501-1: 2007-B-s2, d0

Ideal for interior design of homes and commercial premises

+ ZOOM



STAMPA ECO-SOSTENIBILE E CERTIFICATA.

Per le nostre carte da parati utilizziamo solo stampa certificata EcoGreen HP LATEX, ecologica e senza solventi chimici. La stampa HP LATEX garantisce prodotti atossici, inodore e ignifughi, rispettosi della salute dell'uomo e dell'ambiente, con standard produttivi di altissima qualità. Con la nostra carta da parati eco-friendly e la stampa HP LATEX ecologica aiuti l'ambiente e la tua salute.

ECO-SUSTAINABLE AND CERTIFIED PRINTING.

We only use we use only EcoGreen certified HP LATEX, ecological and without chemical solvents for our wallpapers.

The HP LATEX printing guarantees some non-toxic, scentless and fire-resistant products, respectful of human health and the environment, with high quality production standards. You can help the environment and your health with our eco-friendly wallpaper and ecological HP LATEX printing.

SERVIZI EXTRA: PERSONALIZZAZIONE

EXTRA SERVICES: CUSTOMIZATION



CARTA DA PARATI MONOCROMATICA MONOCHROME WALLPAPER

Personalizza la tua parete con il colore che desideri. Basta comunicarci il codice del Pantone e potrai avere sulla tua parete l'effetto elegante delle nostre carte, nel tuo colore preferito.

Customize the wall with your wished color. You should just inform us on the Pantone code and you will have the elegant effect of our wallpapers on your wall in your desired color.



CARTA DA PARATI FOTOGRAFICA PERSONALIZZATA CUSTOM PHOTO WALLPAPER

Trasforma la tua fotografia in carta da parati.

Inviaci la foto in alta risoluzione e noi penseremo a creare la tua carta da parati esclusiva.

Turn your photo into wallpaper.

Send us the photo in high resolution and we will take care of creating your exclusive wallpaper.



Immagine originale



Colori personalizzati



Monocromatico

LA NOSTRA IMMAGINE, I TUOI COLORI OUR IMAGE, YOUR COLORS

Scegli la tua carta da parati tra le nostre proposte e adatta le tonalità e le cromie al tuo ambiente e ai tuoi gusti. I nostri designer ti aiuteranno a modificare i colori per realizzare la tua carta da parati perfetta.

Choose your wallpaper among our proposals and adapt the shades and colors to your environment or according to your tastes. Our staff will help you to change colors and fulfill your perfect wallpaper.

commitalia@adria-art.com
export@adria-art.com



Leaves

CIRCONDATI DALLA NATURA
NATURE ALL AROUND

CROMIE AUTUNNALI
AUTUMN SHADES



CP0102



CP0100



CP0104



CP0170





CP0212

L'ARMONIA DEL VERDE INCONTRA
LA MAESTOSITÀ DELLE FOGLIE

*GREEN HARMONY MEETS
THE LEAVES MAGNIFICENCE*

CP0152



TROPICAL LEAVES



GRANDI FOGLIE
TROPICALI
SU FONDO LEGNO
SHABBY CHIC

*LARGE
TROPICAL
LEAVES
ON WOODEN
SHABBY CHIC
BACKGROUND*

CP0290



SENSAZIONE
DI PURA REALTÀ
SULLA TUA
PARETE

*PURE REALITY
SENSATION
ON YOUR WALL*



CP0228



— wallpaper —



CP0220

VESTI LA TUA PARETE,
SCEGLI IL TUO
DIPINTO DI FOGLIE.

*DRESS YOUR WALL,
CHOOSE YOUR
LEAF PAINTING.*



CP0216



CP0214





CP0222



CP0226



CP0154



CP0230



FOGLIE SU TESSUTO *LEAVES ON FABRIC*



CP0266



CP0264



CP0132



CP0138

JUNGLE STYLE NELLA CROMIA DEI TONI FREDDI
JUNGLE STYLE IN COLD TONES



CP0120



CP0122



CP0136



CP0140



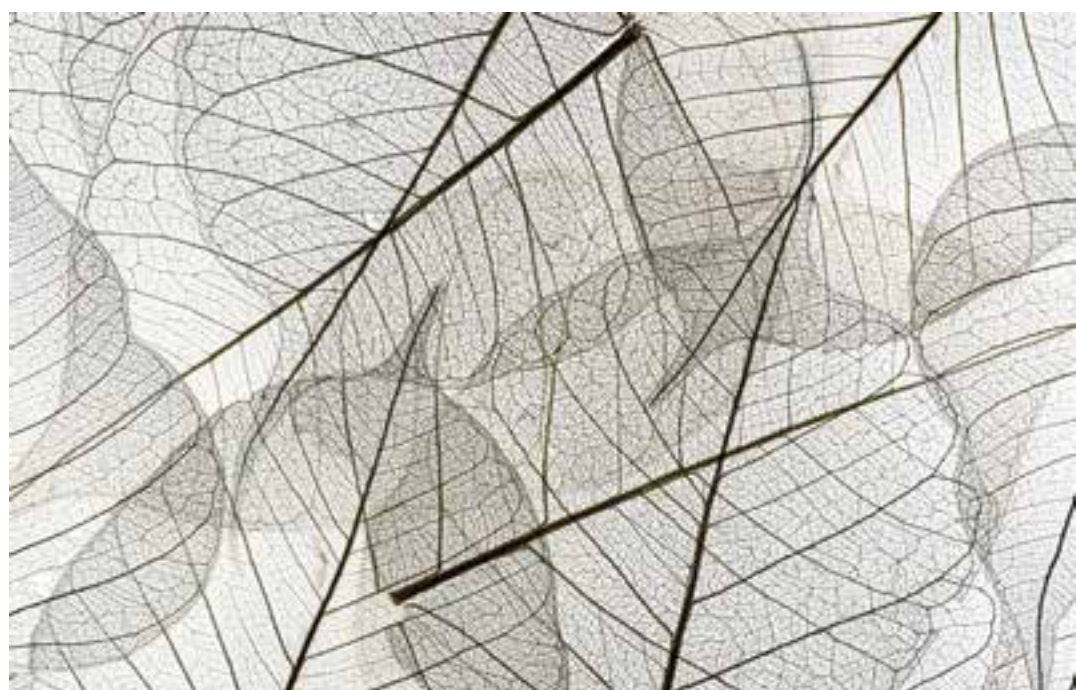
CP0260



DECOUPAGE DI FOGLIE...
LEAVES DECOUPAGE...



CP0110



CP0112



CP0116

**DELICATE
VELATURE
IN SCALA
DI GRIGI**

*DELICATE
VEILS OF
GRAY TONES*



GRANDI
FOGLIE DAI
PREZIOSI
COLORI.

*LARGE
LEAVES
WITH
PRECIOUS
COLORS*



CP0224



CP0130

— wallpaper —



CP0146



CP0108



CP0106



CP0150





LE PALME
SI INCONTRANO
A FORMARE UNA
GEOMETRIA
PERFETTA

*PALMS JOIN UP
TO FORM A
PERFECT
GEOMETRY*

CP0218

CONTRASTO
DI FOGLIE
STAMPATE

*CONFLICT
OF PRINTED
LEAVES*



CP0134



INCANTEVOLE
BOSCO
DI BAMBÙ

*FASCINATING BAMBOO
WOOD*

CP0300

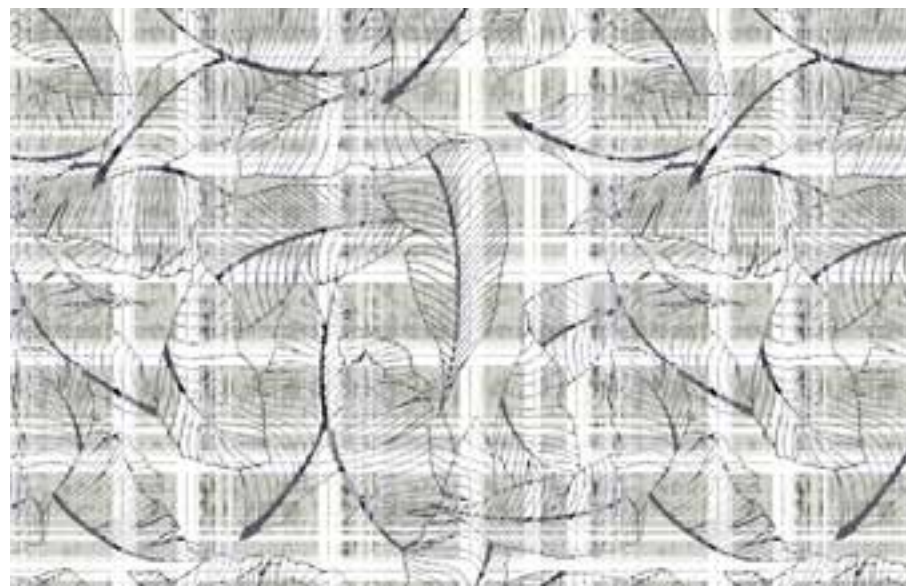




TRACCIATI DI FOGLIE
PATH OF LEAVES

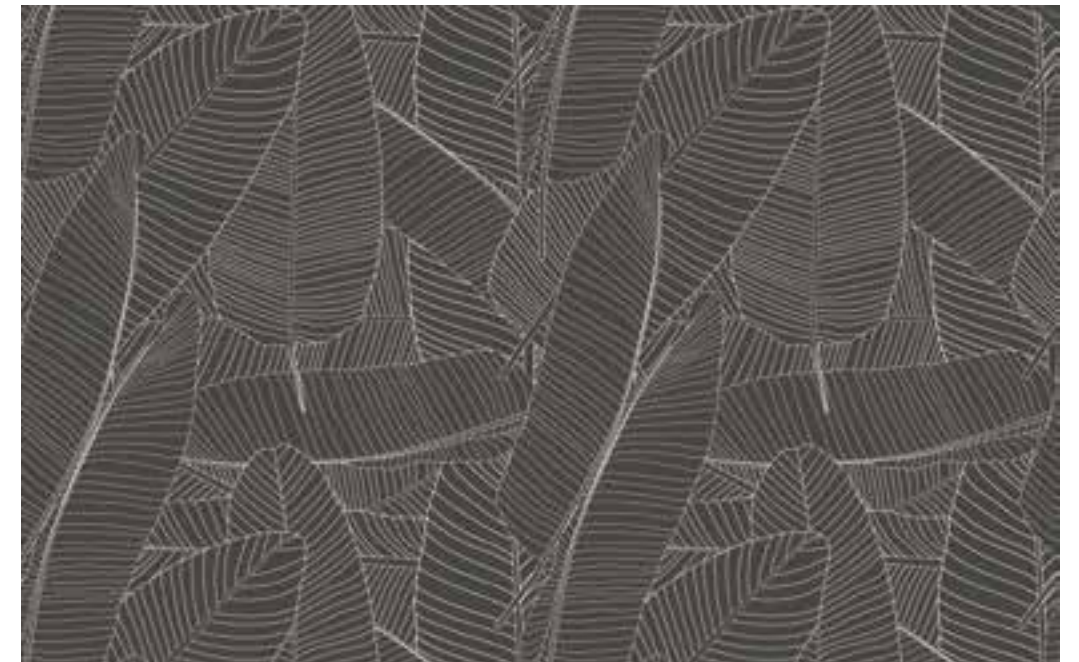


CP0158



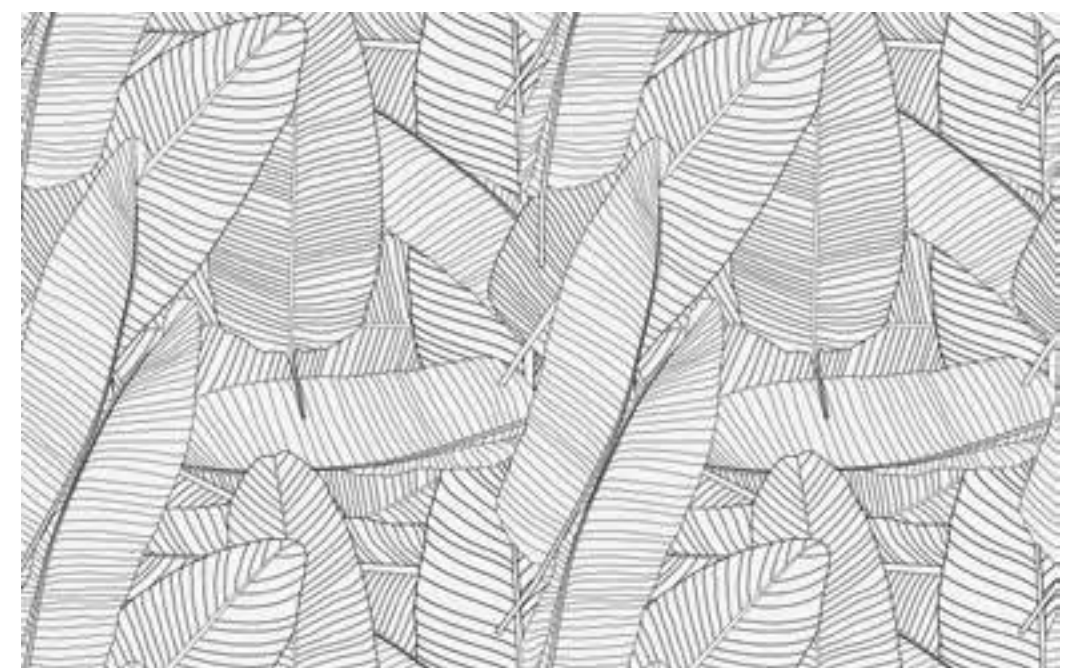
CP0118





CP0156

BIANCO O NERO?
BLACK OR WHITE?



CP0114



COMBINAZIONE
DI VIVACI CROMIE

*COMBINATION
OF VIVID SHADES*

CP0178

DELICATI
TONI
DEL ROSA
E GRIGIO

*GENTLE
TONES
OF ROSE
AND GRAY*



CP0184





L'EFFETTO
DI UNA SOFFICE
PARETE
PIUMATA.

*THE SOFT
FEATHERED
WALL EFFECT*

CP0180



CP0438



Flowers design

SBOCCIA LA PARETE
THE WALL BLOWS

EFFETTO "VISSUTO" *ANTIQUED EFFECT*



COMPOSIZIONE
DECORATIVA
A INCHIOSTRO
PER UNA CARTA
DA PARATI
D'ALTRI TEMPI

*DECORATIVE INK
COMPOSITION FOR
A WALLPAPER
OF OLD TIMES*

CP0278





CP0288

LUMINOSO
TRIONFO
DI ROSE
AMBRATE

*BRIGHT
BLAZE OF
AMBER ROSES*





CP0208



CP0206

CONTRASTI FORTI E COLORI VIVACI
PER SOGGETTI IN STILE GIAPPONESE

*STRONG CONTRASTS AND BRIGHT COLORS
IN JAPANESE STYLE*





TUTTA LA MAESTOSITÀ DELL' ORIENTE SULLA TUA PARETE
ALL EASTERLY MAGNIFICENCE ON YOUR WALL



CP0194



CP0392





UN MIX DI
RAFFINATEZZA
ARMONIA
E PACE
INTERIORE

*A BLEND
OF GRACE,
HARMONY
AND INNER
PEACE*



CP0192



CP0280



UN PERFETTO EQUILIBRIO
NATURALE DI COLORI PASTELLO
PER QUESTA CARTA IN STILE VINTAGE.

*A PERFECT NATURAL BALANCE OF PASTEL-COLOURED
FOR THIS VINTAGE STYLE WALLPAPER*



CP0202



CP0204





CP0172



CP0160



CP0328





STILE ROMANTICO PER UNA CARTA
FLOREALE CLASSICA SENZA TEMPO
*ROMANTIC STYLE FOR A TIMELESS
CLASSICAL FLORAL WALLPAPER*





CP0276



CP0142



CP0144



CP0162



L'AMORE PER I FIORI ESPRESSA
IN MOLTEPLICI COMPOSIZIONI FLOREALI

*LOVE FOR FLOWERS ARISES
FROM MULTIPLE FLORAL COMPOSITIONS*



CP0182



CP0230



CP0164



CP0170

CREAZIONI
GRAFICHE
FLOREALI

*FLORAL
GRAPHIC
CREATIONS*

DECORAZIONI
CLASSICHE
CON EFFETTO
CONSUMATO

*CLASSICAL
DECORATIONS
WITH ANTIQUED
EFFECT*



CP0268



CP0274





LA LUMINOSITÀ DEL BIANCO FA DA SFONDO
A UNA NATURA SPOGLIA DI COLORI

*THE WHITE BRIGHTNESS MAKES A BACKGROUND
TO AN UNCOLOURED NATURE*

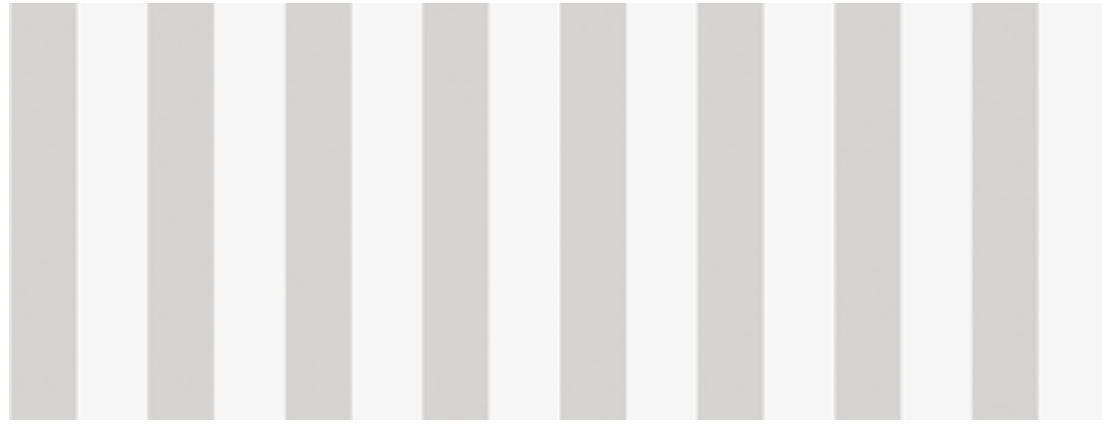


Righe

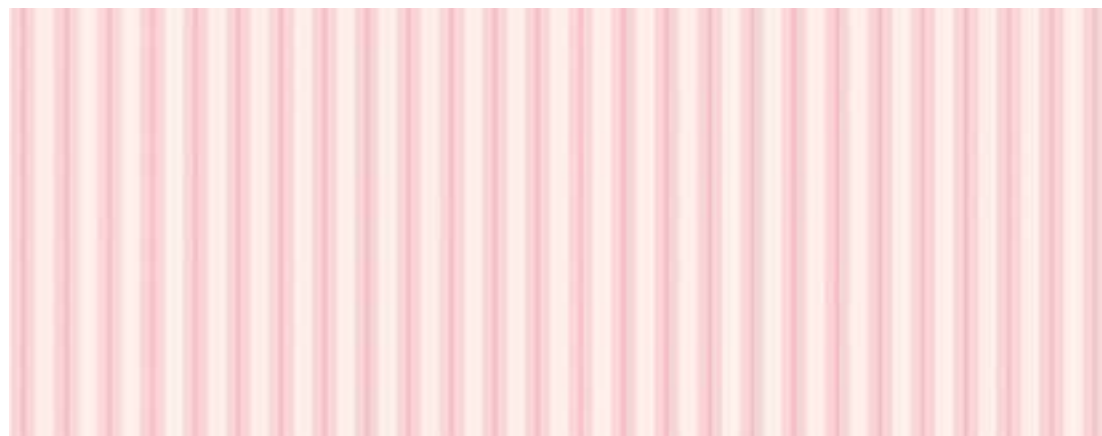
RAFFINATE COMBINAZIONI
REFINED COMBINATIONS



RIGHE CLASSICHE... *CLASSICAL STRAIGHT LINES...*



CP0342



CP0338



CP0340

O SIMPATICI POIS! *FUNNY POLKA DOTS!*



CP0340





CP0330

PIACEVOLE RIVELAZIONE
DI ARTISTICHE
FIGURE FEMMINILI
IN MEZZO ALLE RIGHE

*PLEASANT ARTISTIC
FEMALE FIGURES
AMONG THE LINES*



CP0332





DIVERTENTI
GEOMETRIE
GRAFICHE
DI FRUTTA
TROPICALE
*FUNNY GRAPHIC
GEOMETRIES
OF TROPICAL FRUIT*

CP0312



CP0316



PER OSARE CON COLORI E SOGGETTI
DARING WITH COLORS AND SUBJECTS



ROSA SHOCKING
ED ECCENTRICI
FENICOTTERI

*SHOCKING PINK
AND ECCENTRIC
FLAMINGOES*

CP0320



PAPPAGALLI
IN UNA GIUNGLA
DI RIGHE

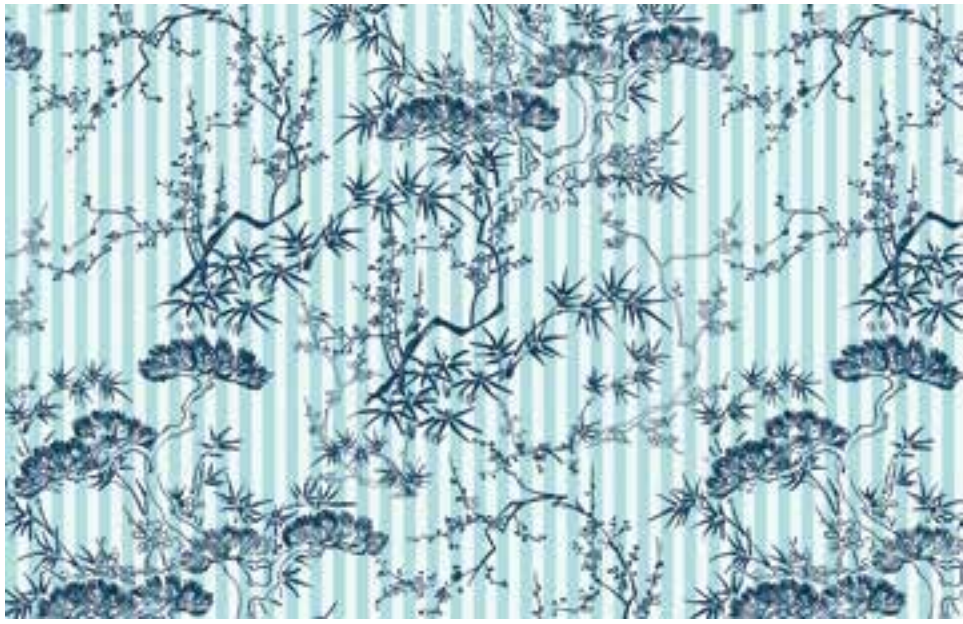
*PARROTS
IN A JUNGLE
OF LINES*



CP0318



wallpaper



CP0326

ARMONIA TRA LE RIGHE
HARMONIES AMONG LINES



CP0314





ELEGANTI RIGHE SI INTRAVEDONO
TRA L'IMPONENZA DELLE FOGLIE

*ELEGANT LINES DISTINGUISH
AMONG THE VASTNESS OF LEAVES*



CP0328



walpaper



RIGHE FLOREALI RAFFINATE E GLAMOUR
REFINED FLORAL AND GLAMOR LINES



CP0324



CP0322

STILE SCOZZESE

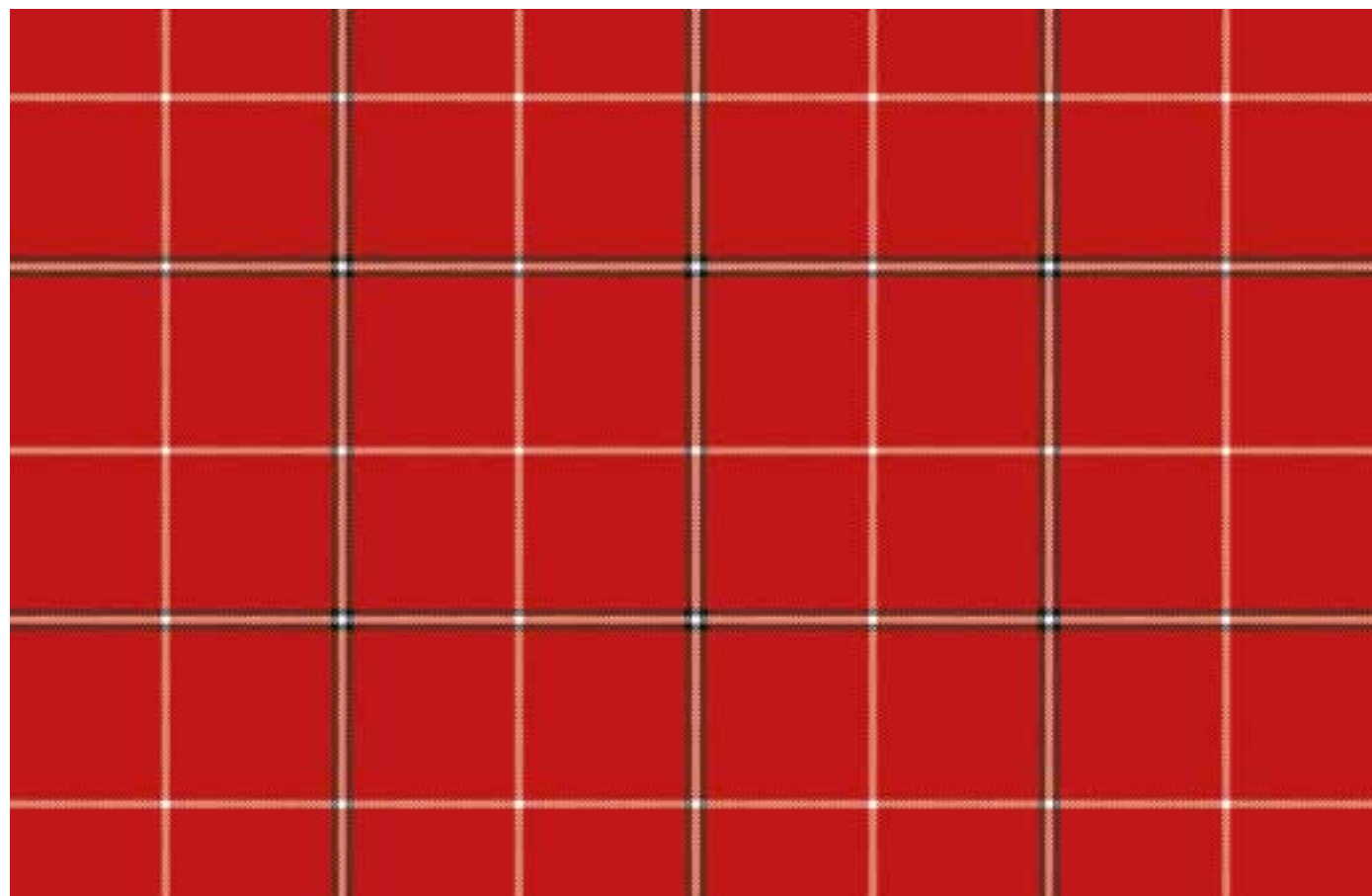
SCOTTISH STYLE



CP0334

RIGHE E COLORI CHE RICHIAMANO
I CLASSICI TESSUTI IN TARTAN

LINES AND COLORS LIKE THE CLASSIC TARTAN FABRICS



CP0335



Animals

LA PARETE PRENDE VITA
THE WALL COMES ALIVE





CP0210

IPNOTICA TIGRE SU FONDO SCURO
O ANIMALI SU FONDO CHIARO?

*HYPNOTIC TIGER ON DARK BACKGROUND
OR ANIMALS ON LIGHT BACKGROUND?*



CP0198



LA MAESTOSITA' DELLA TIGRE
RICAMATA SULLA PARETE

TIGER MAJESTY ON THE WALL



CP0190



CP0282

DIVERSE
RAPPRESENTAZIONI
CON SVARIATI
EFFETTI PITTORICI
PER UN SOLO
ED UNICO SOGGETTO

*DIFFERENT IMAGES
WITH POSSIBLE
PICTORIAL EFFECTS
FOR A UNIQUE SUBJECT*



CP0188





CP0186

JUNGLE STYLE, IMMERSI NELLA NATURA.
JUNGLE STYLE, DEEP IN NATURE.



CP0186

ORIENTAL BIRDS



CP0320



CP0284

SCEGLI IL TUO SFONDO PREFERITO
CHOOSE YOUR FAVOURITE BACKGROUND



CP0200



Black&white

ELEGANTI CONTRASTI
REFINED CONTRASTS



CP0246



CP0242

**ASTRATTISMO GEOMETRICO
CON MONOCROMIE SFUMATE**

*GEOMETRIC ABSTRACTISM
WITH SHADED TONES*

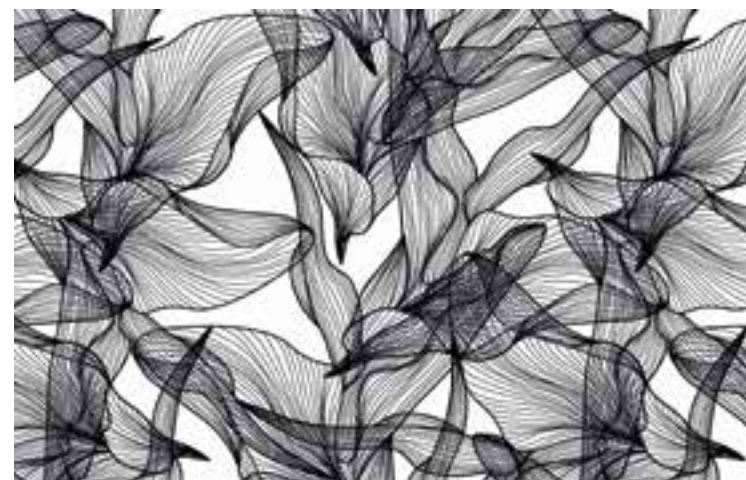
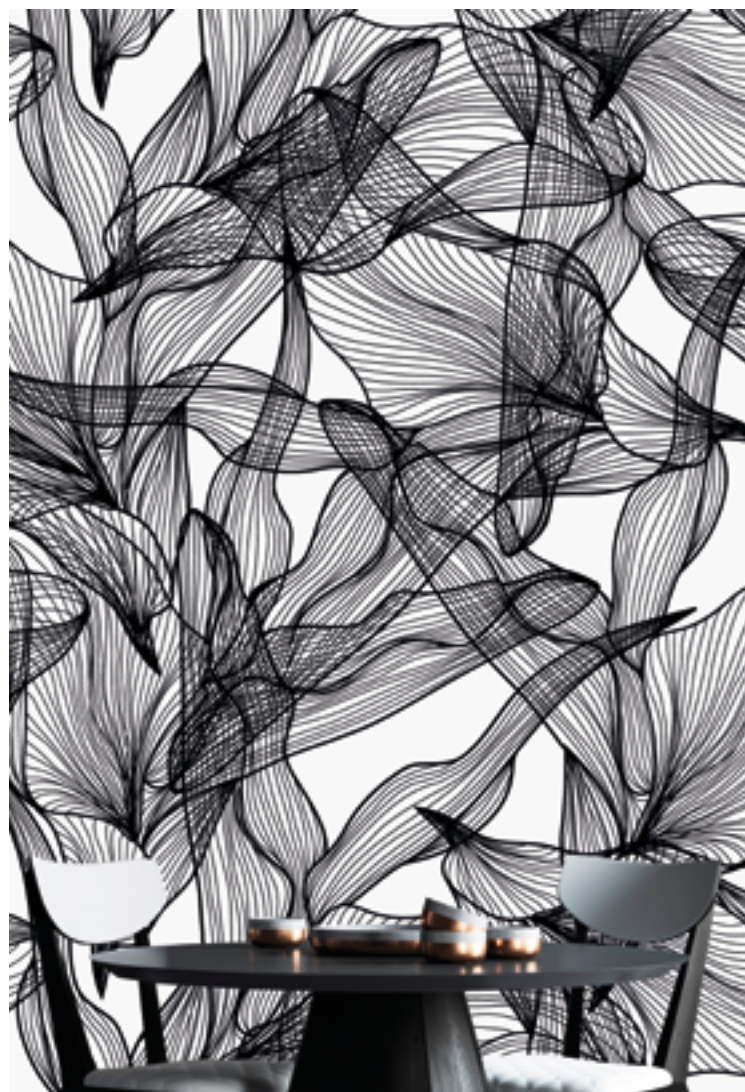


CP0240

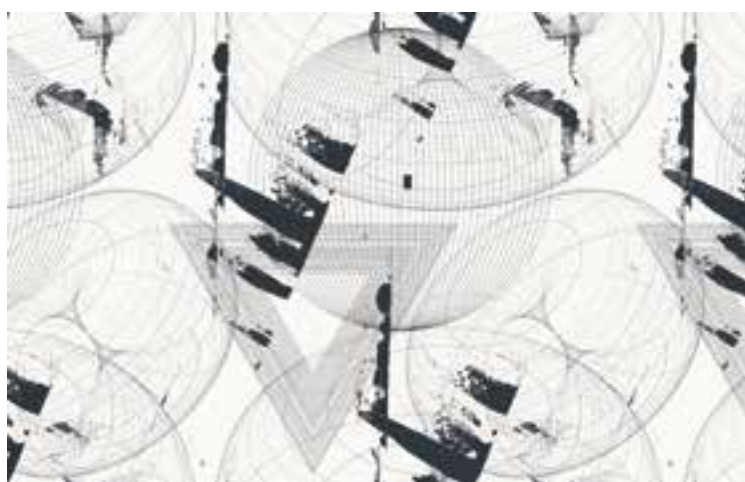


IL BIANCO E NERO CHE SI INCONTRANO RAPPRESENTANO L'ESTREMO PUNTO DI CONTRASTO

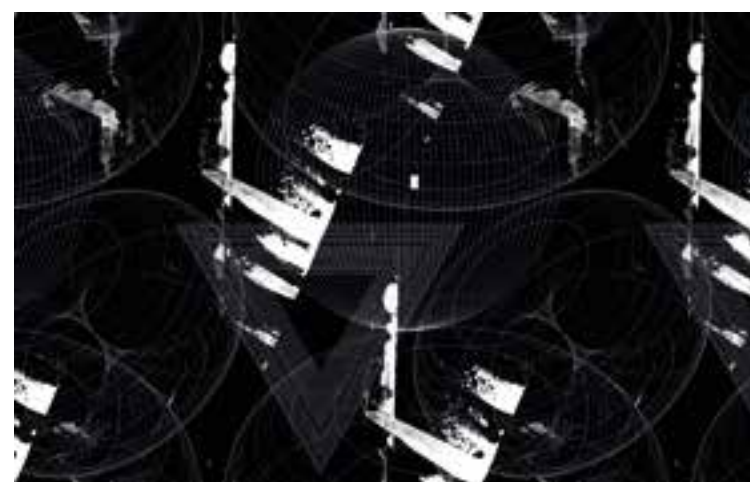
THE BLACK AND WHITE THAT JOIN UP, REPRESENT THE EXTREME POINT OF CONTRAST



CP0344



CP0346



CP0348

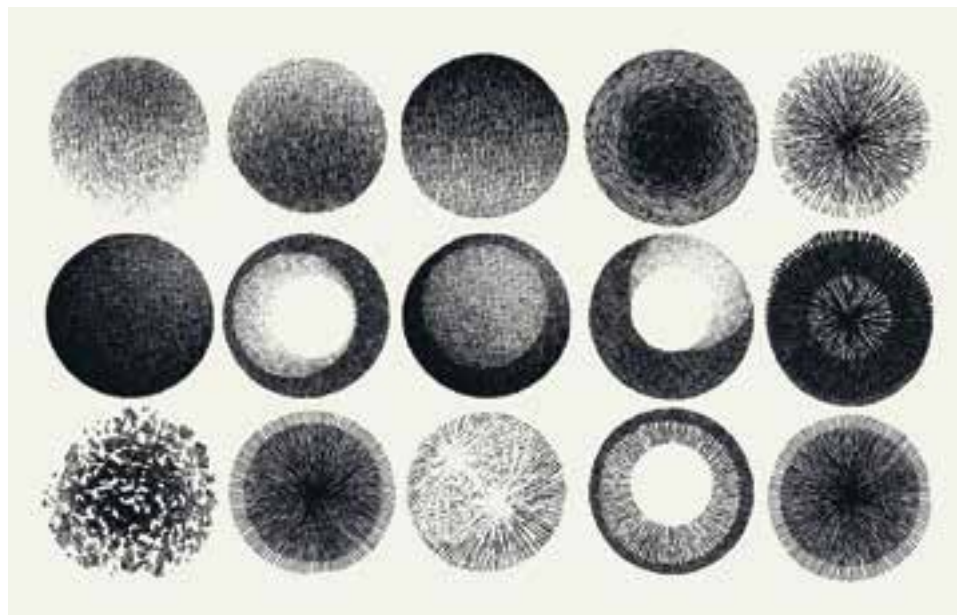




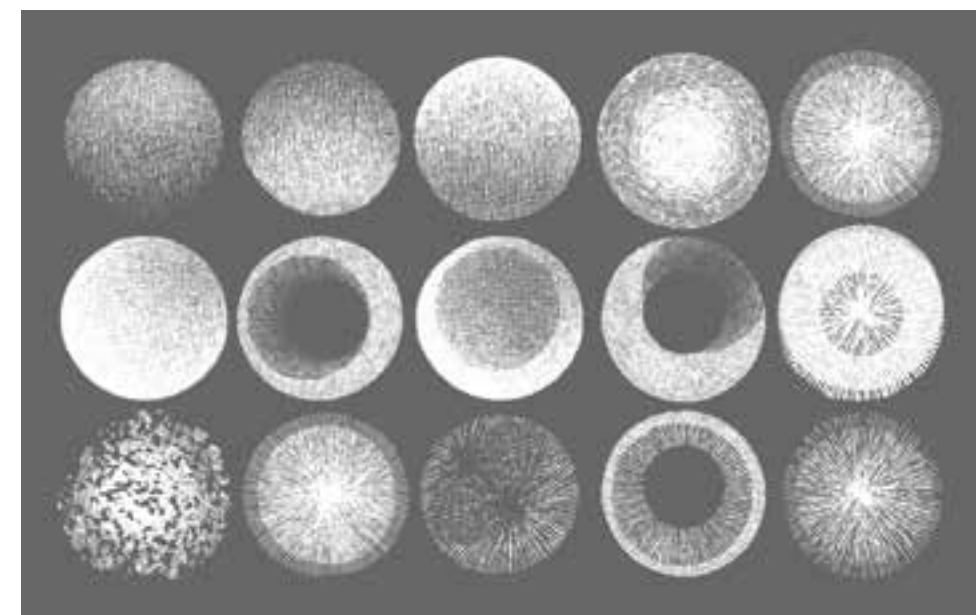
CP0164

DUE PARTICOLARI
PARETI DI CERCHI
IN CHIAROSCURO
CONTRAPPOSTE
FRA LORO

*TWO PARTICULAR
WALLS OF CIRCLES
IN CONTRAST*



CP0350



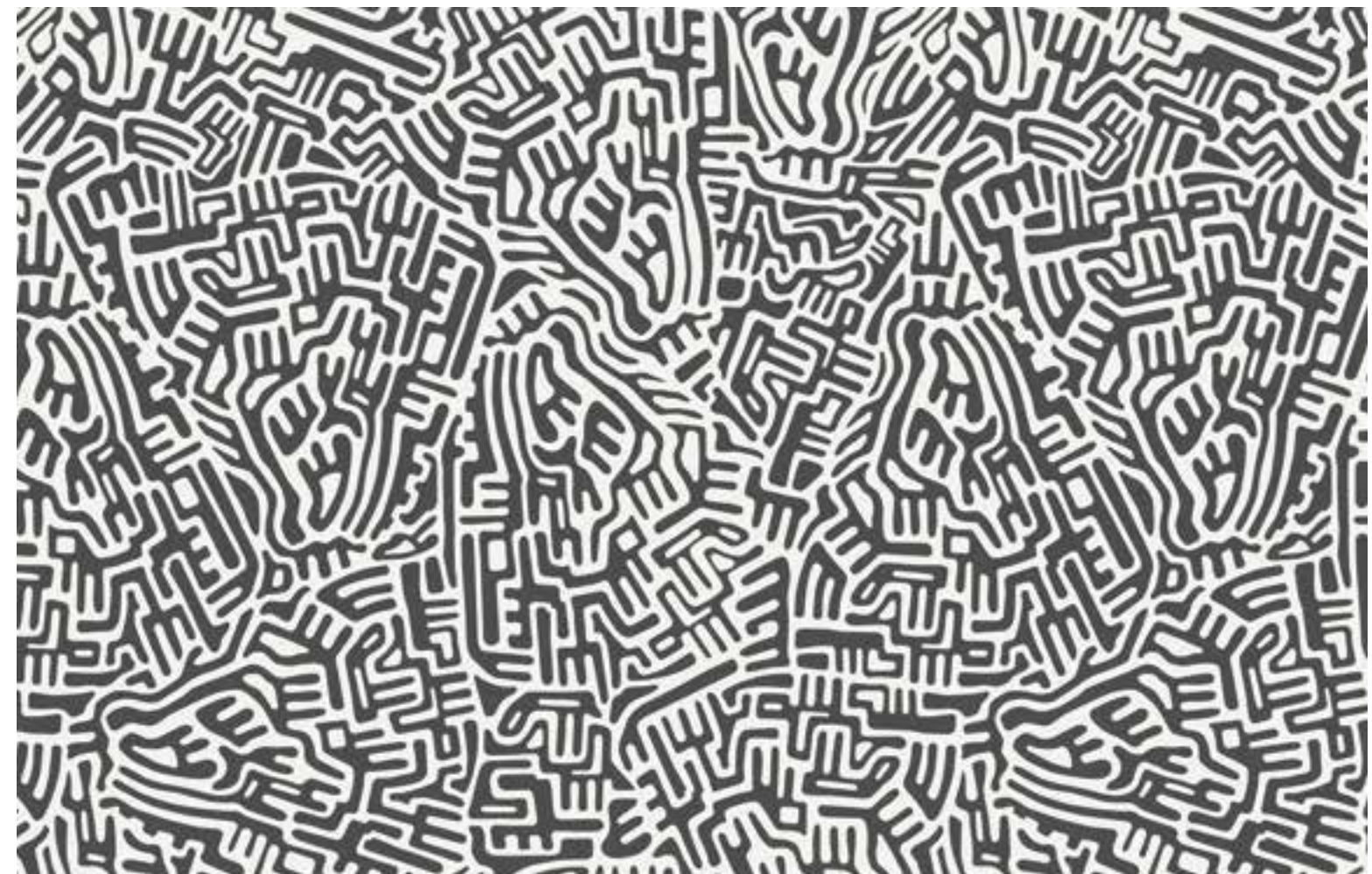
CP0352

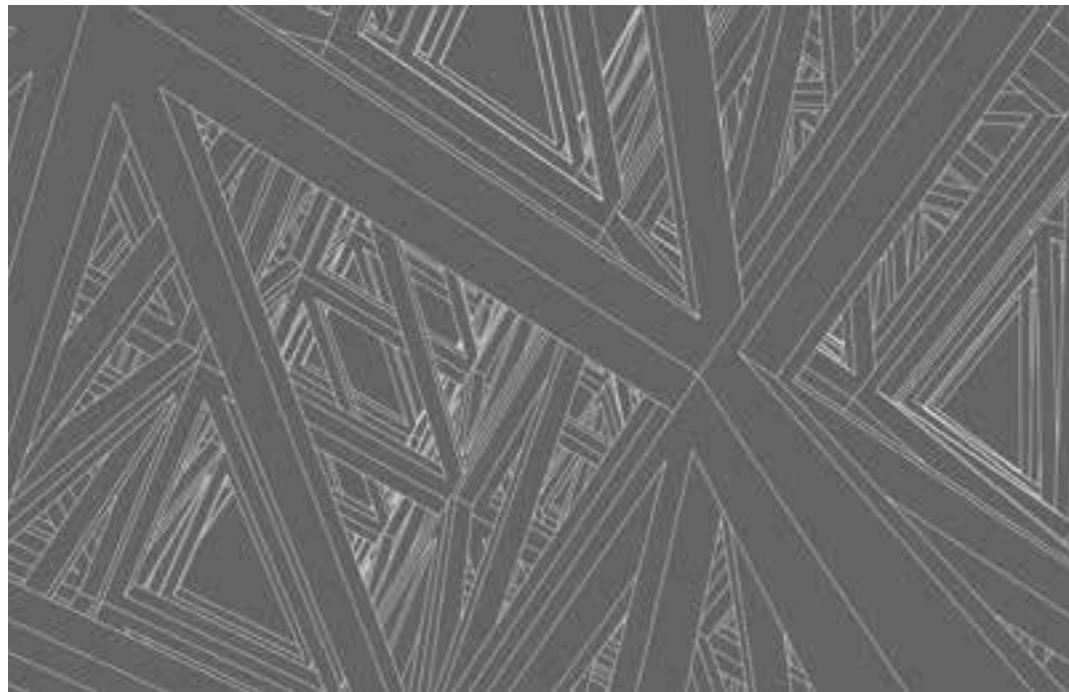


CP0418

LINEE E CURVE DI ISPIRAZIONE NEO-POP
NEO-POP LINES AND CURVES

CP0420

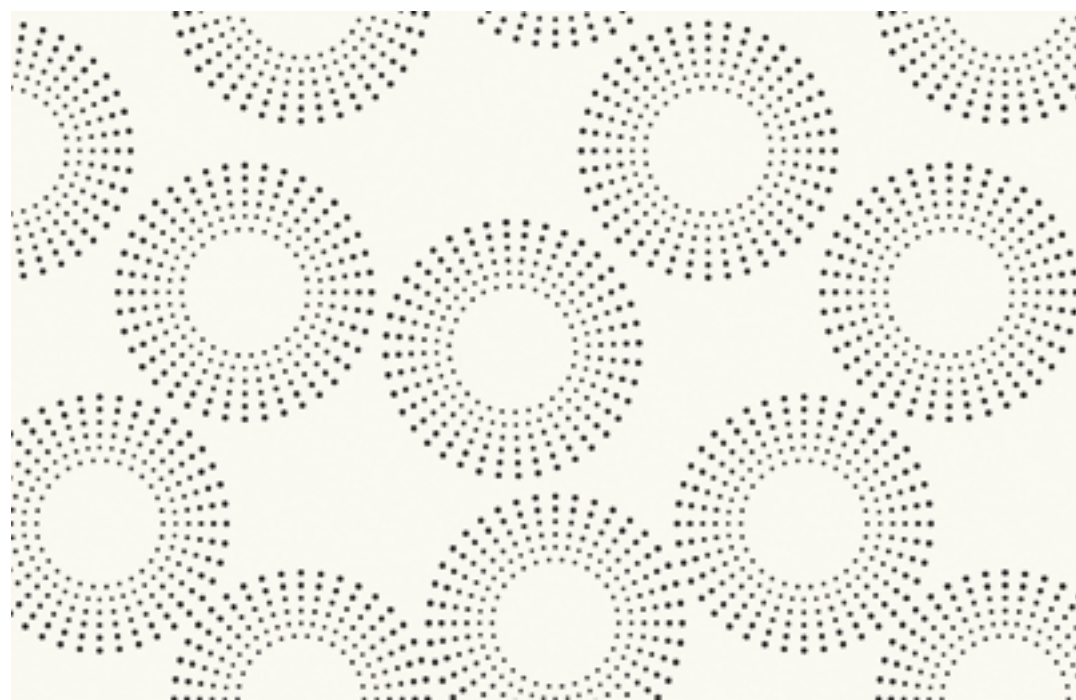




CP0354



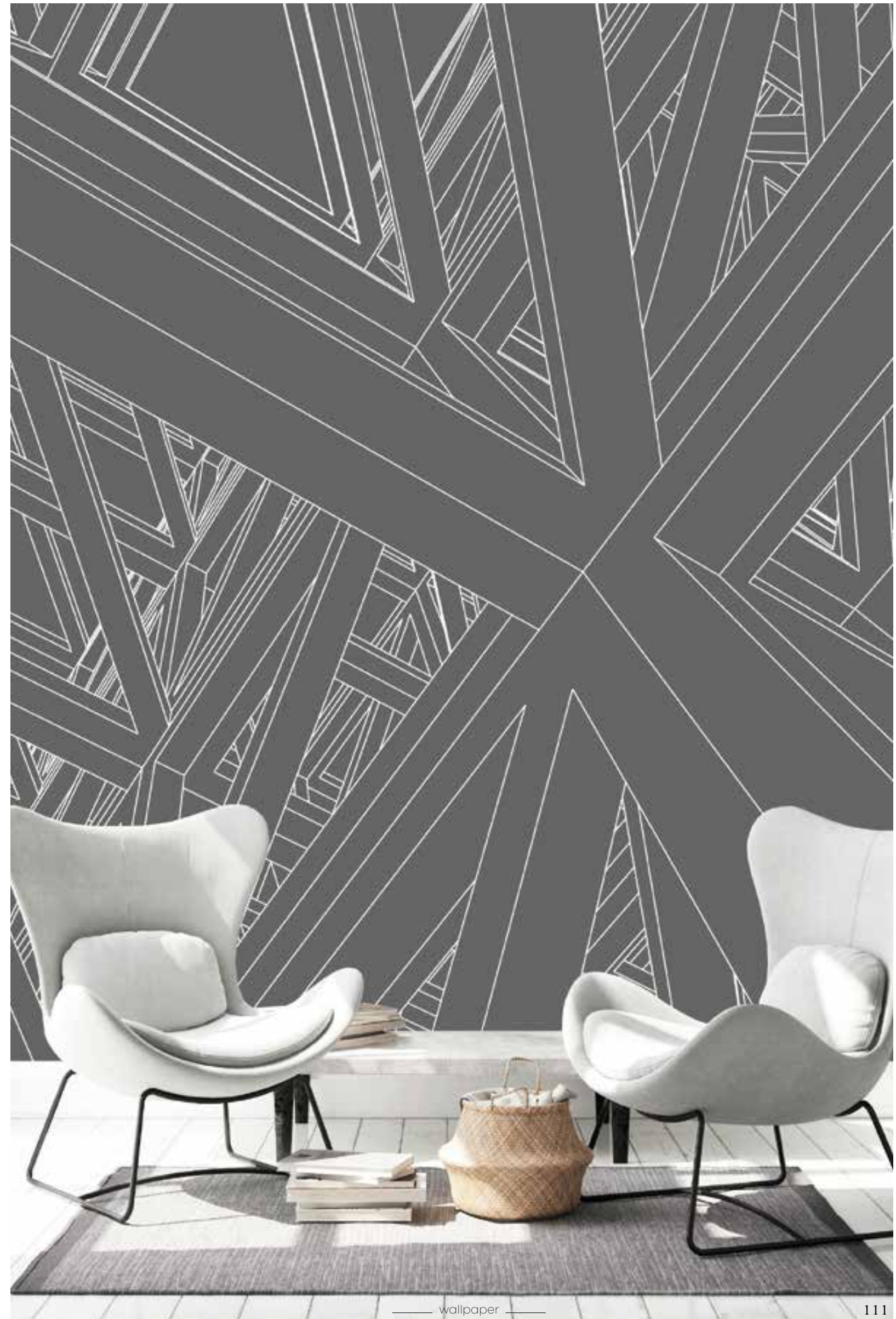
CP0410



CP0412

UNO SPAZIO
GEOMETRICO
FATTO DI
LINEE,
PUNTI E
CONTRASTI

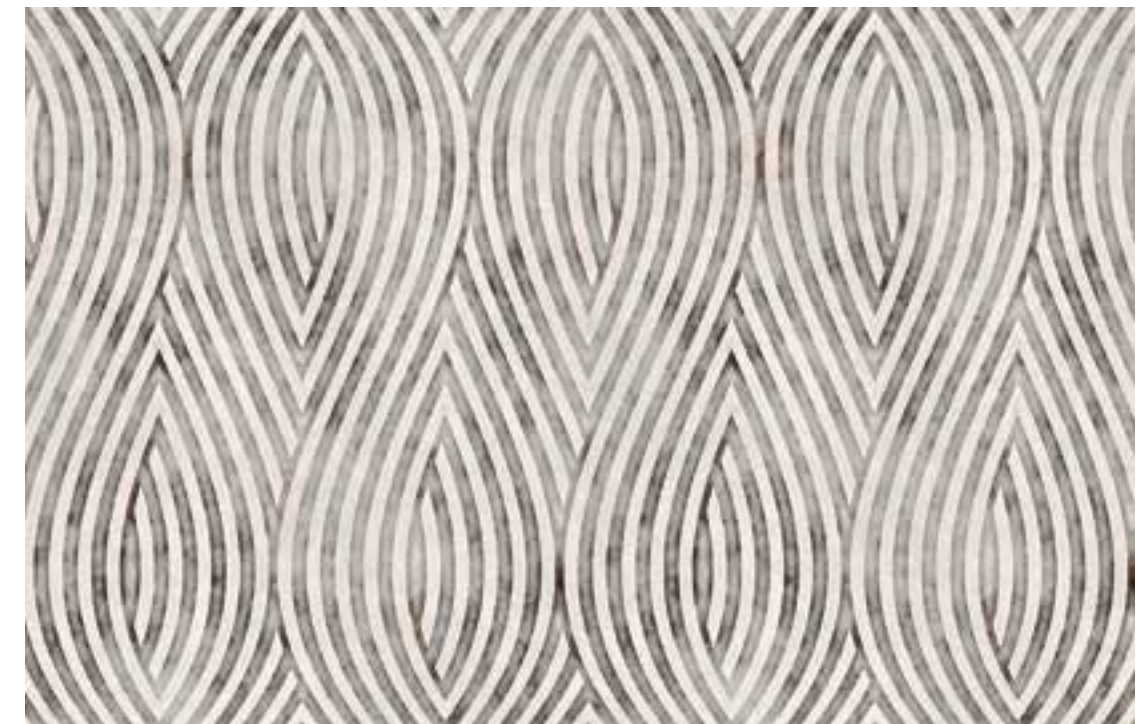
*A GEOMETRIC
SPACE
MADE OF
LINES,
POINTS AND
CONTRASTS*





CP0374

TUTTA LA POTENZIALITA' ESPRESSIVA DELLE LINEE
ALL THE LINES EXPRESSIVITY



CP0252



CP0244

**IPNOTICHE LINEE E
RILASSANTI SFOCATURE**

*HYPNOTIC LINES
AND RELAXING SHADES*



Letters
GRAFIA A PARETE
GRAPHIC WALL

SCRITTURA INDECIFRABILE

SCRAWLY HANDWRITING



CP0364



CP0366



wallpaper



MURI
DI LETTERE
E PAROLE
*WALLS
WITH LETTERS
AND WORDS*

CP0360



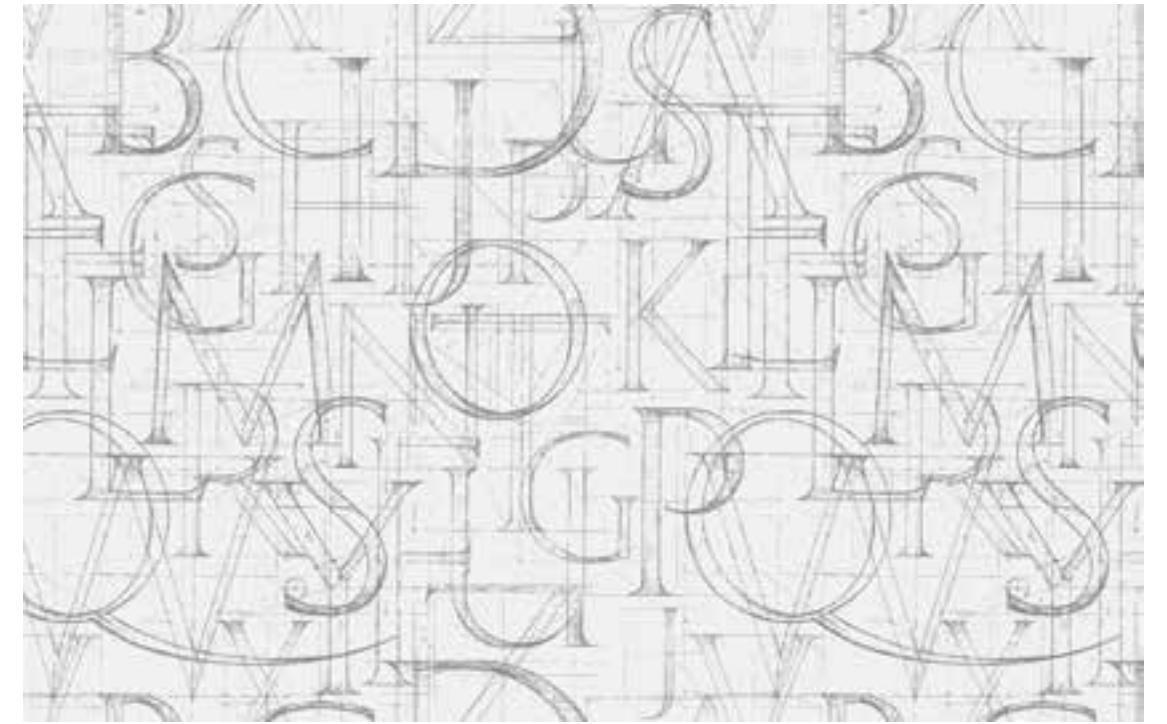
CP0368



CP0356



— wallpaper —



CP0358



CP0258

LINEE GEOMETRICHE PERFETTE ESCONO DALLA
MATITA PER CREARE UN ALFABETO SOVRAPPSTO

*PERFECT GEOMETRIC LINES COME OUT OF THE PENCIL
TO CREATE AN OVERLAPPED ALPHABET*

PAGINE TAGLIATE E INCOLLATE
CUT AND PASTED PAGES



CP0378



CP0370



Grafica
ARTE MURALE
MURAL ART

MURALES



CP0384

MURI ARTISTICI. CLASSICO O MODERNO?
CLASSIC OR MODERN ARTISTIC WALLS ?



CP0386

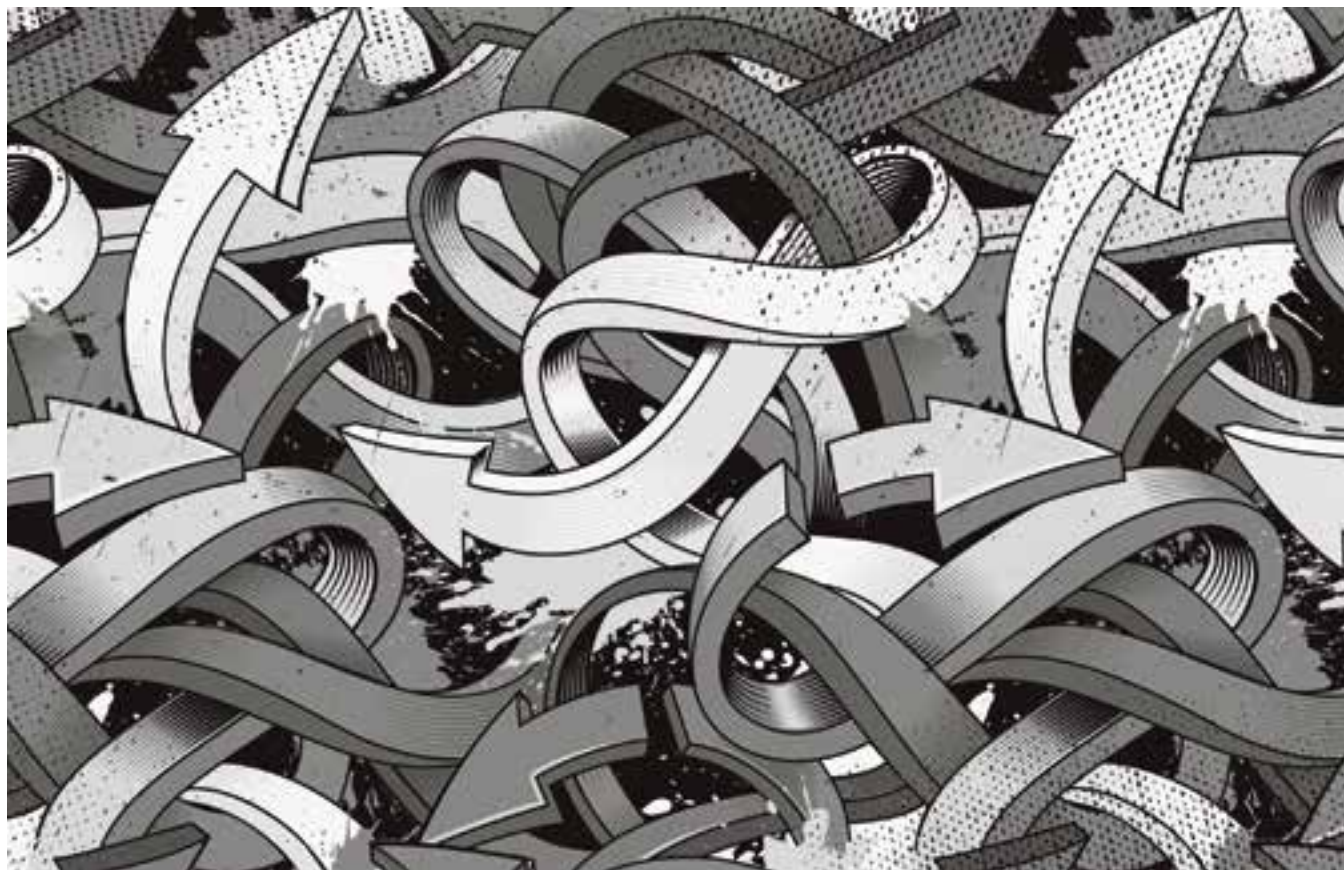


MURALES MODERNI CON COLORI
STRAVAGANTI O IN BIANCO E NERO

*MODERN MURALES WITH ECCENTRIC
COLORS OR WHITE AND BLACK*



CP0390



CP0396



CP0388



LA PARETE
SI RIVESTE
DI UNA
GRAFICA
GEOMETRICA
EFFETTO
TESSUTO

*THE WALL
IS DRESSED
WITH A GE-
OMETRIC
GRAPHIC EF-
FECT FABRIC*



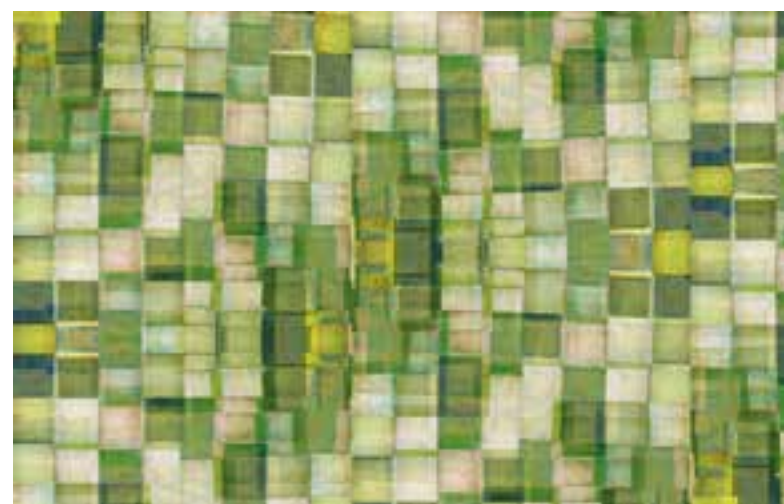
CP0422

TRATTI
DI LINEE
RETTE CHE
FORMANO
CERCHI DI
CHIAROSCURI

*LINES
OF STRAIGHT
LINES FORMING
CIRCLES OF LIGHT
AND DARK*



CP0296



COLORI
E FORME
RICOPRONO
LA PARETE

*COLORS AND
SHAPED
DRESS THE
WALL*

CP0292



CP0250



CP0398



CP0400



CP0372



IL POTERE
MAGNETICO
DELLA FORMA
GRAFICA
CIRCOLARE

*THE MAGNETIC
POWER OF THE
CIRCULAR
GRAPHIC FORM*

CP0428



CP0426



CP0248



wallpaper

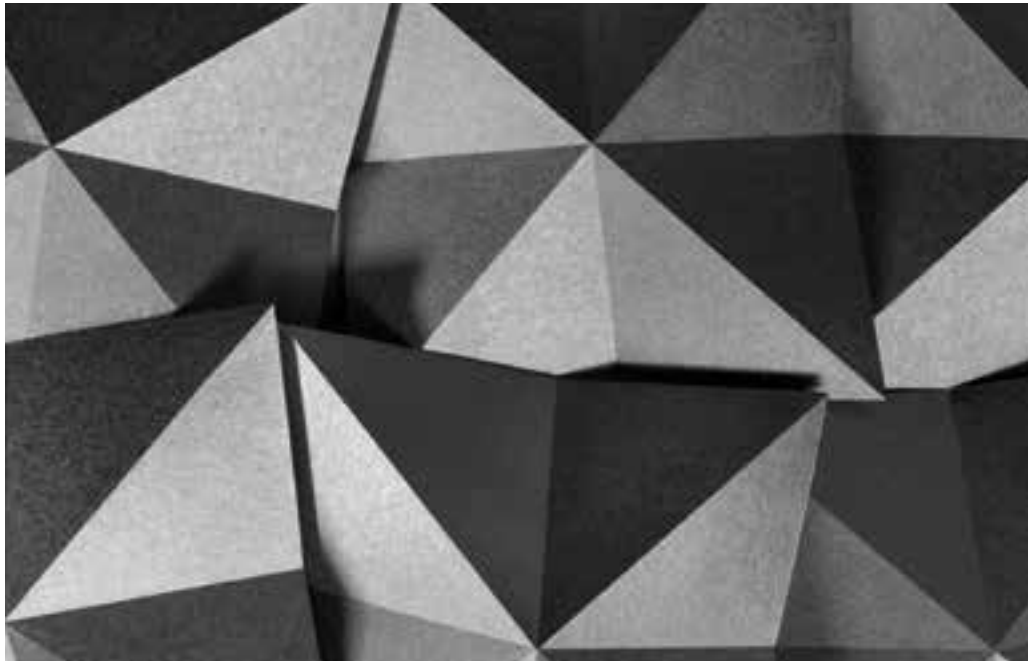
139

Geometrie

LINEE MORBIDE, LINEE RETTE, 3D
SOFT LINES, STRAIGHT LINES, 3D



CP0518



CP0520

EFFETTO TRIDIMENSIONALE
THREE-DIMENSIONAL EFFECT



CP0522



CURVE
GEOMETRICHE
TENUI
E DELICATE

*FEEBLE
AND DELICATE
GEOMETRIC
CURVES*



CP0402



CP0408

GEOMETRIE
DI FIORI

*FLOWER
GEOMETRIES*



CP0406



SPIRITO VINTAGE E ISPIRAZIONE ANNI '70
VINTAGE SPIRIT AND THE 70S INSPIRATION



CP0430



CP0434



CP0404



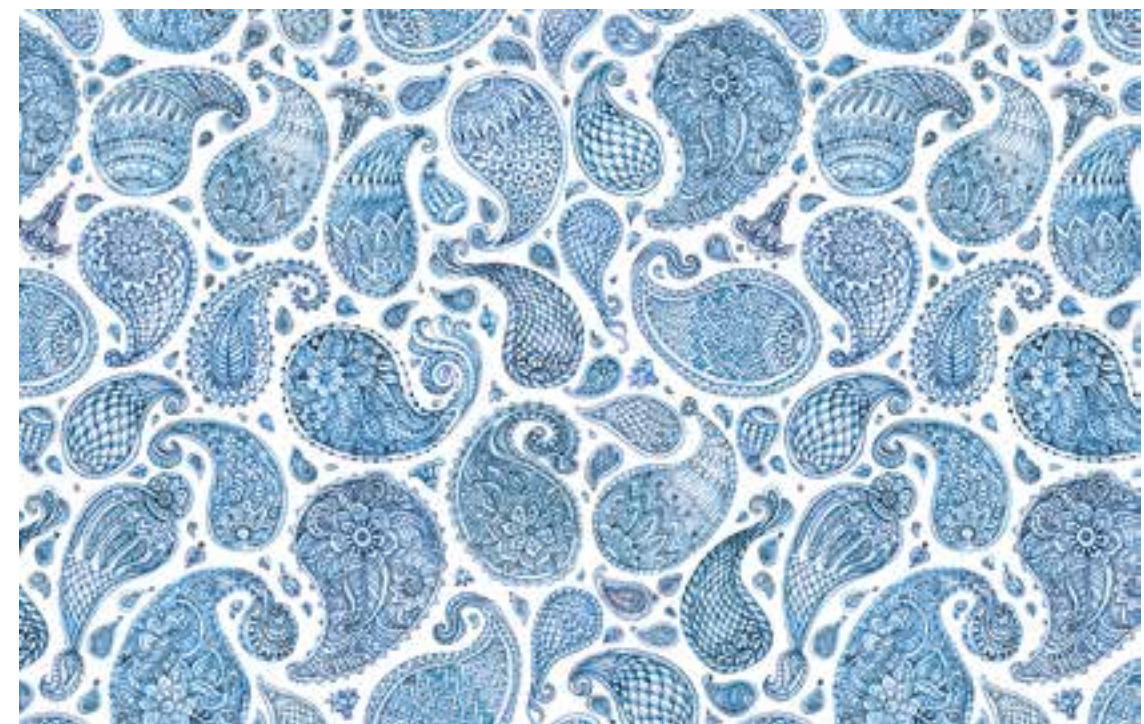


LO SFONDO SI ALLARGA GRAZIE
ALLE PARTICOLARI FORME TURCHESI

*THE BACKGROUND SPREADS
TO THE PARTICULAR TURQUOISE FORMS*



CP0436

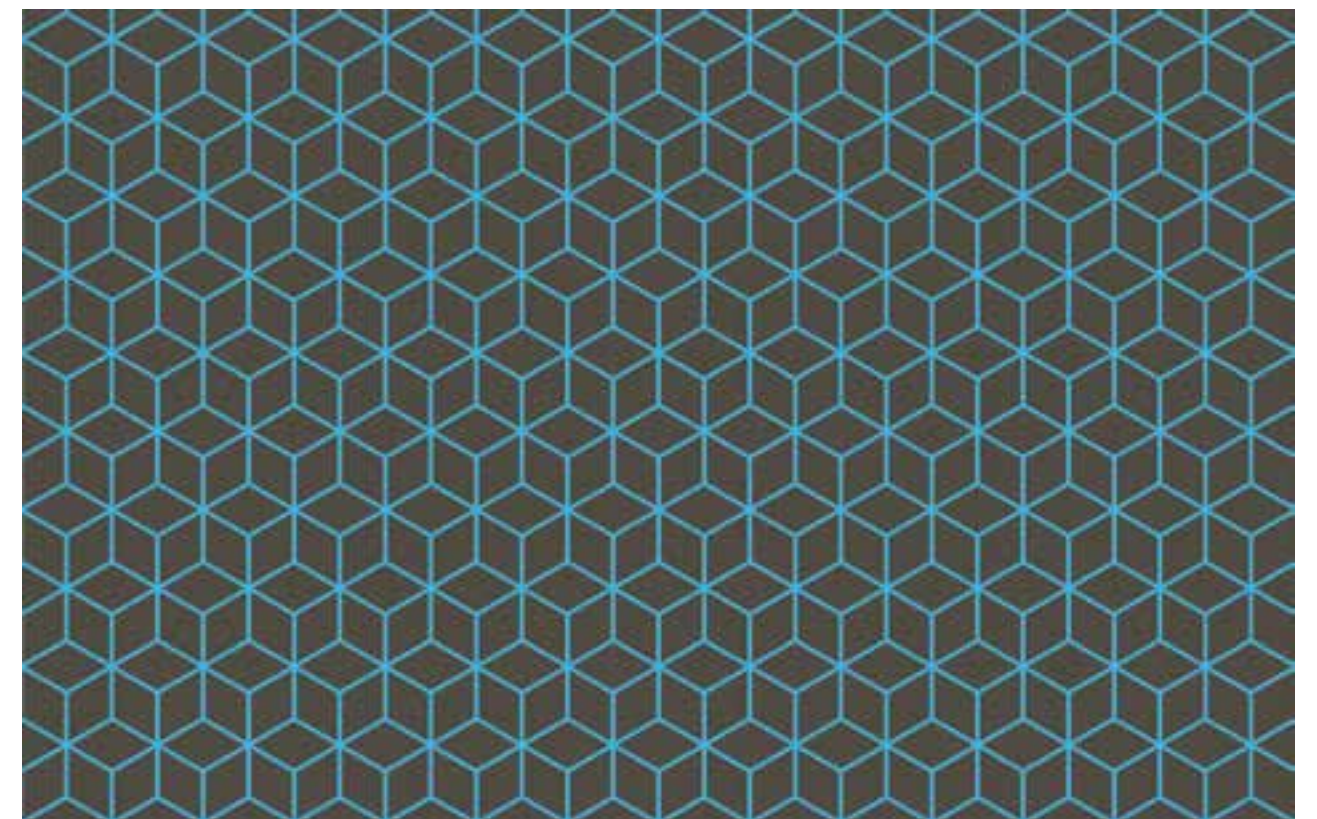


CP0432



CP0294

**CUBI E COLORI.
L'EFFETTO OTTICO NON PUO' MANCARE!**
*CUBES AND COLORS.
AND THEIR OPTICAL EFFECT!*



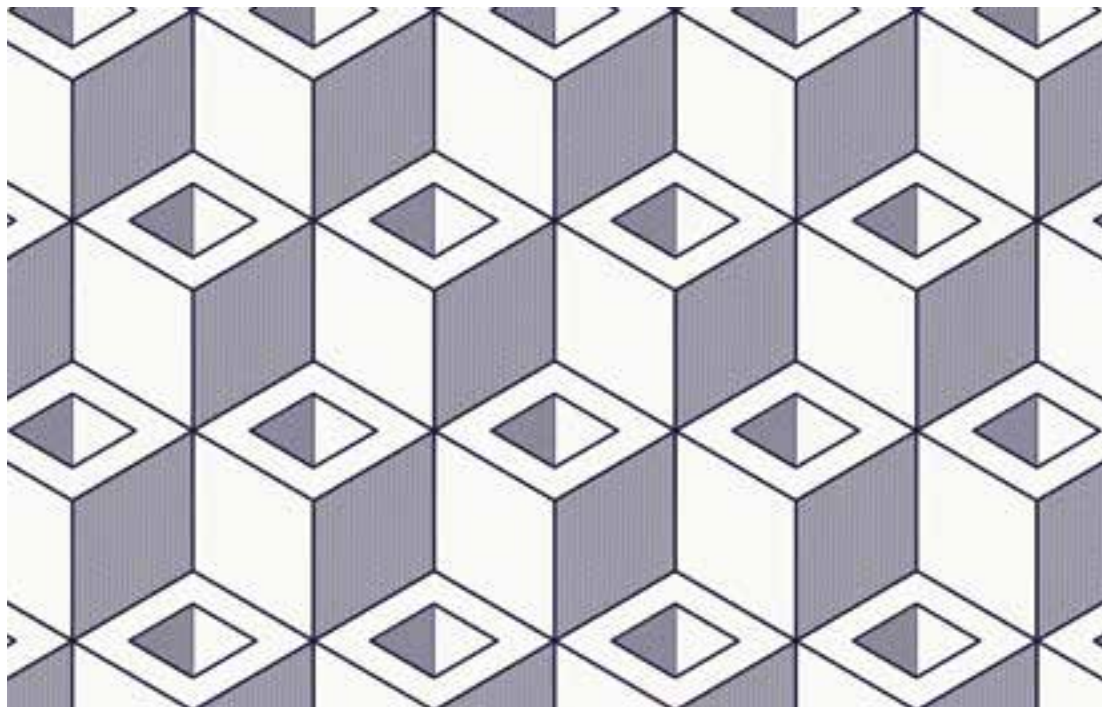
CP0440

STILE REALISTICO
REALISTIC STYLE



CP0236

STILE GRAFICO
GRAPHIC STYLE



CP0414





IL FASCINO GEOMETRICO DEI ROMBI E RETTANGOLI
THE GEOMETRIC CHARM OF RHOMBUS AND RECTANGLES



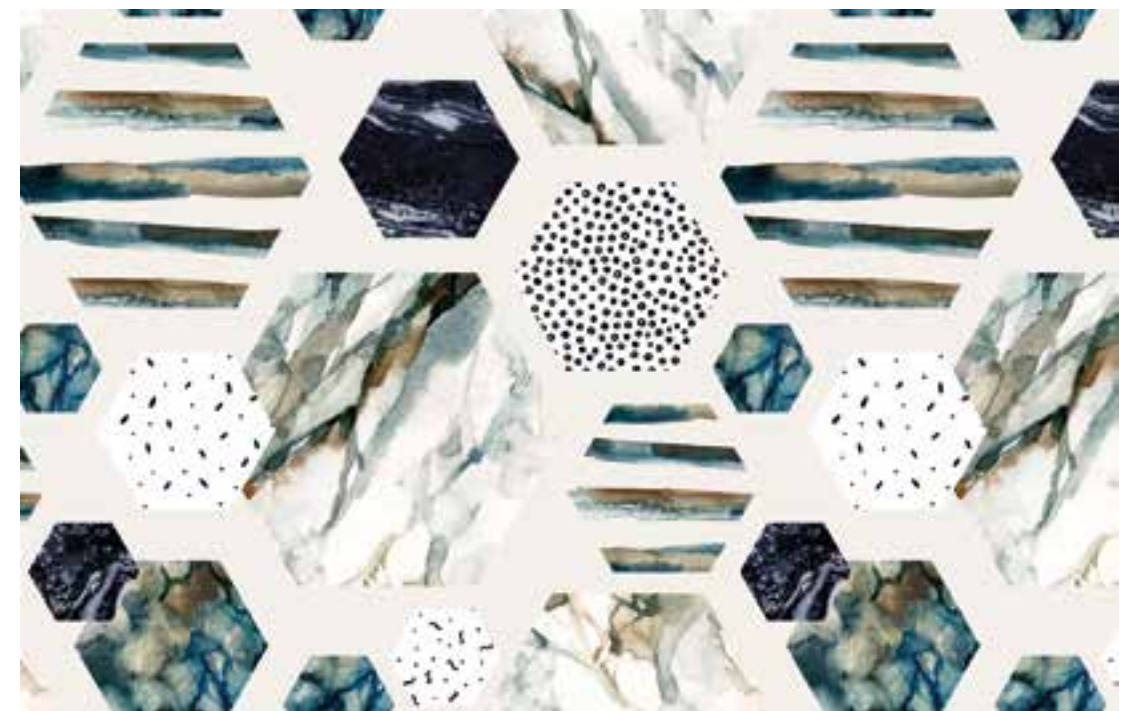
CP0234



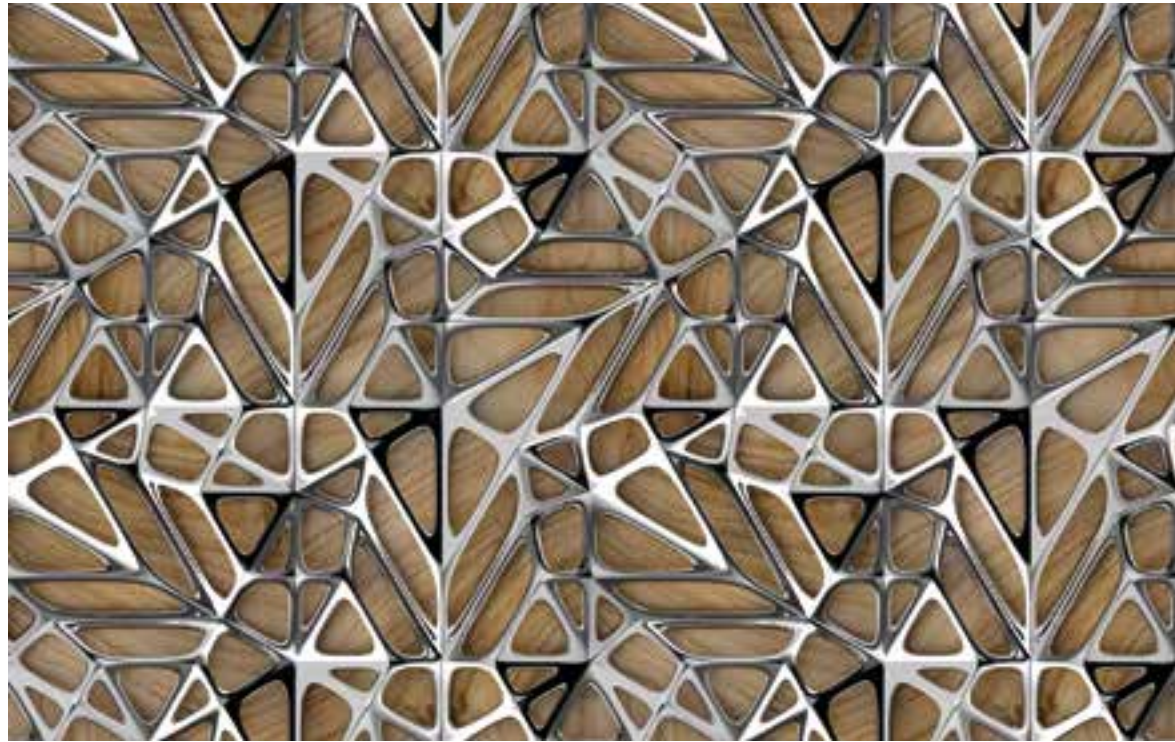
CP0416



CP0382



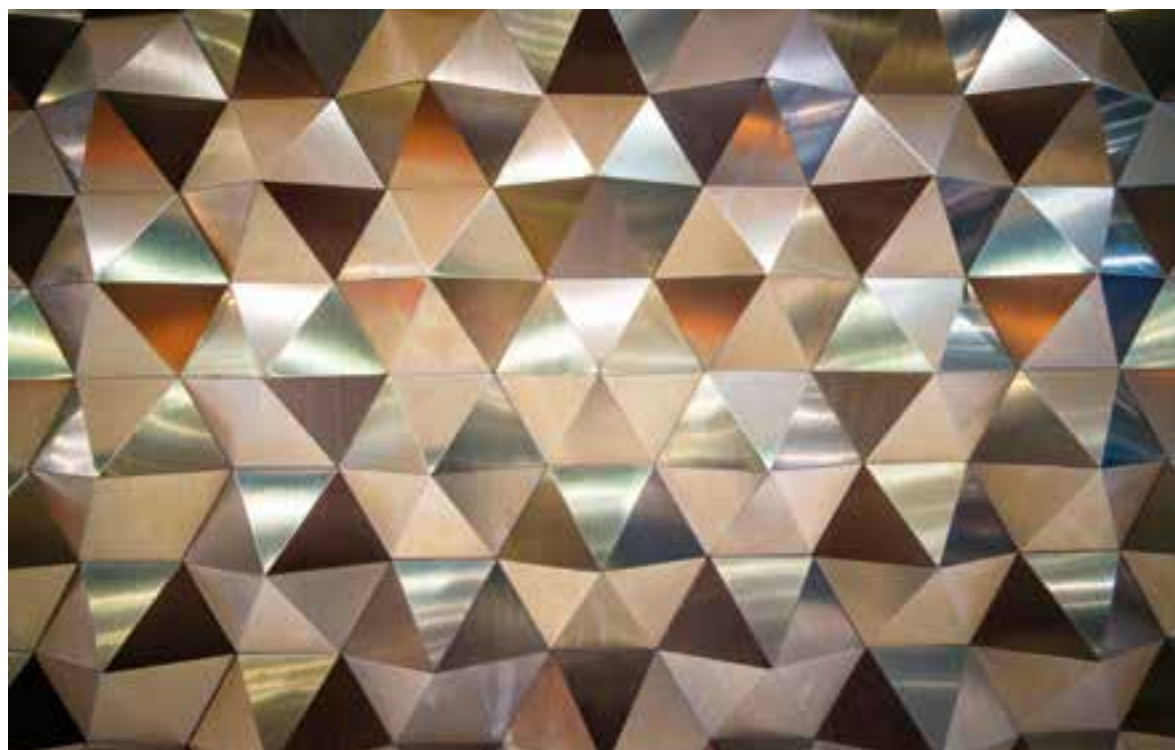
CP0380



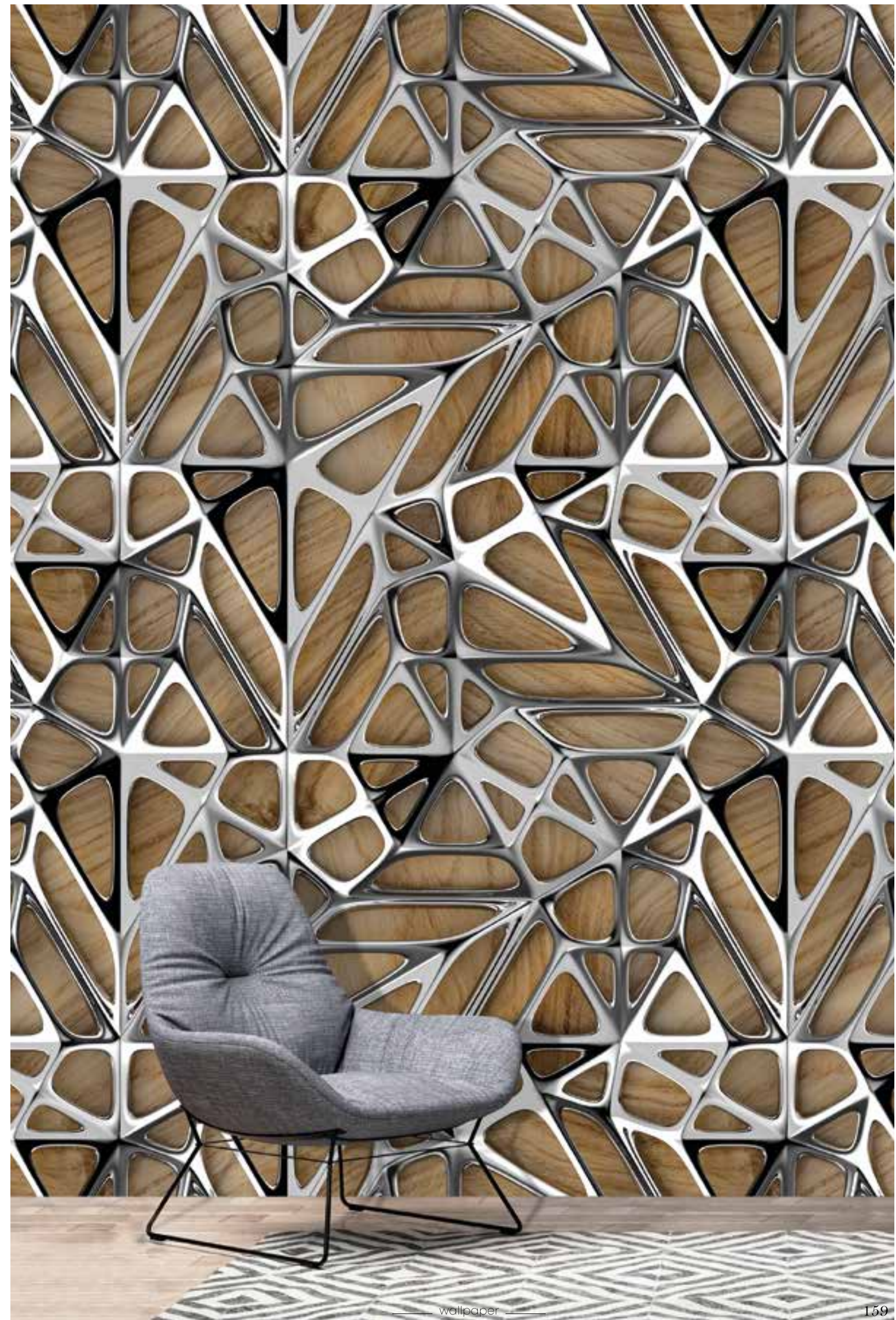
CP0526

METALLO CROMATO TRIDIMENSIONALE CREA
UNA PARETE DI LUCE E RIFLESSI

*THREE-DIMENSIONAL CHROMED METAL CREATES
A LIGHT AND REFLECTIONS WALL*



CP0524

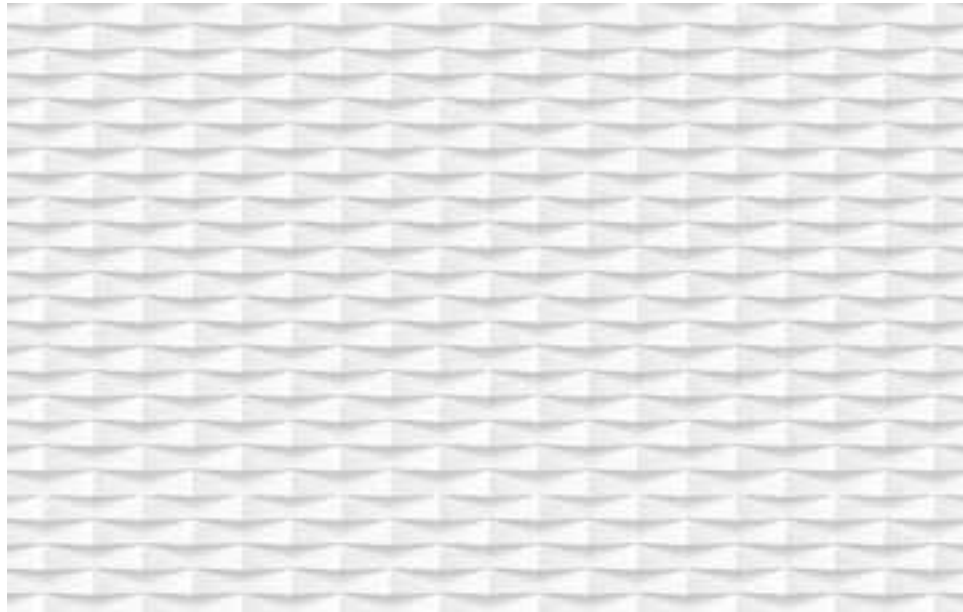


EFFETTO TRIDIMENSIONALE

3D EFFECT



CP0510



CP0504

SCENOGRAFIE
CANDIDE
CON ELEMENTI
CHE SEMBRANO
USCIRE DAL MURO

*PURE SCENOGRAPHIES
WITH ELEMENTS
THAT SEEM TO COME
OUT OF THE WALL*



CP0512



CP0500

GIOCO DI CHIAROSCURI
CHIAROSCURO EFFECTS



CP0422

FITTE LINEE
ONDULATE CHE
SCENDONO DAL
SOFFITTO

*STRIPED WAVY
LINES THAT GO
DOWN FROM THE
CEILING*



CP0506

ONDE CHE
ATTRAVERSANO
LA PARETE

*WAVES
CROSSING
THE WALL*



CP0508

TRAME METALLICHE CON EFFETTO TRIDIMENSIONALE
METALLIC TWISTS WITH THREE-DIMENSIONAL EFFECT



CP0516



CP0502



Gold

PARETI CHE BRILLANO
SHINING WALLS

ROSA DORATO
GOLDEN ROSE



CP0302



CP0304

UNA
COMBINAZIONE
ELEGANTE
DI LUCE E FORME

*AN ELEGANT
COMBINATION
OF LIGHT
AND SHAPES*

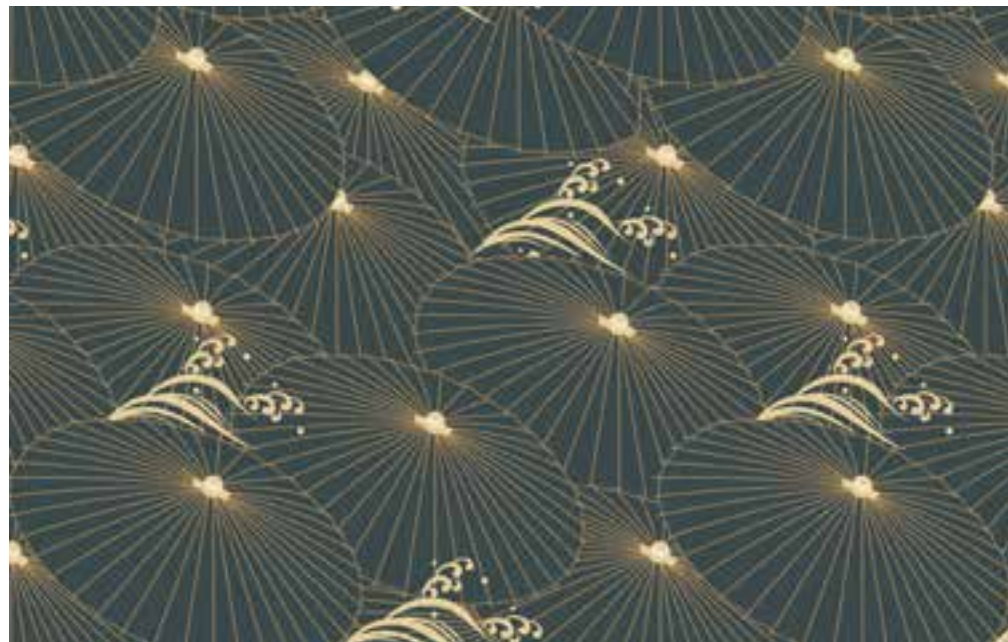


CP0306





CP0514



CP0310



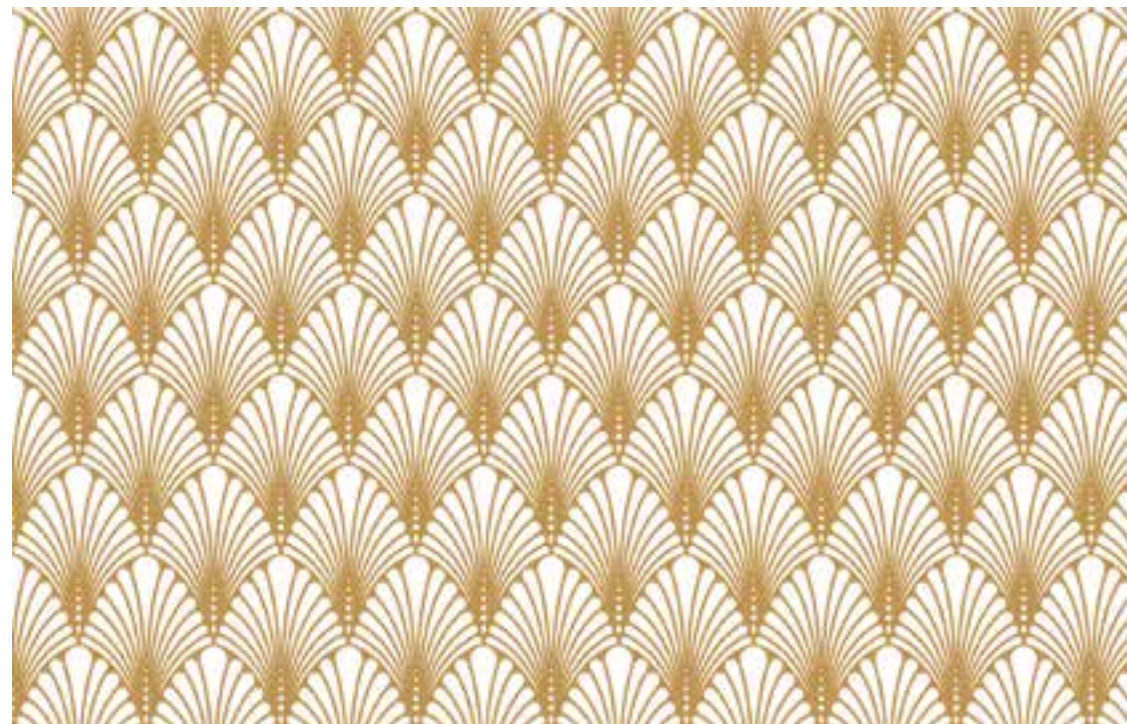
CP0308



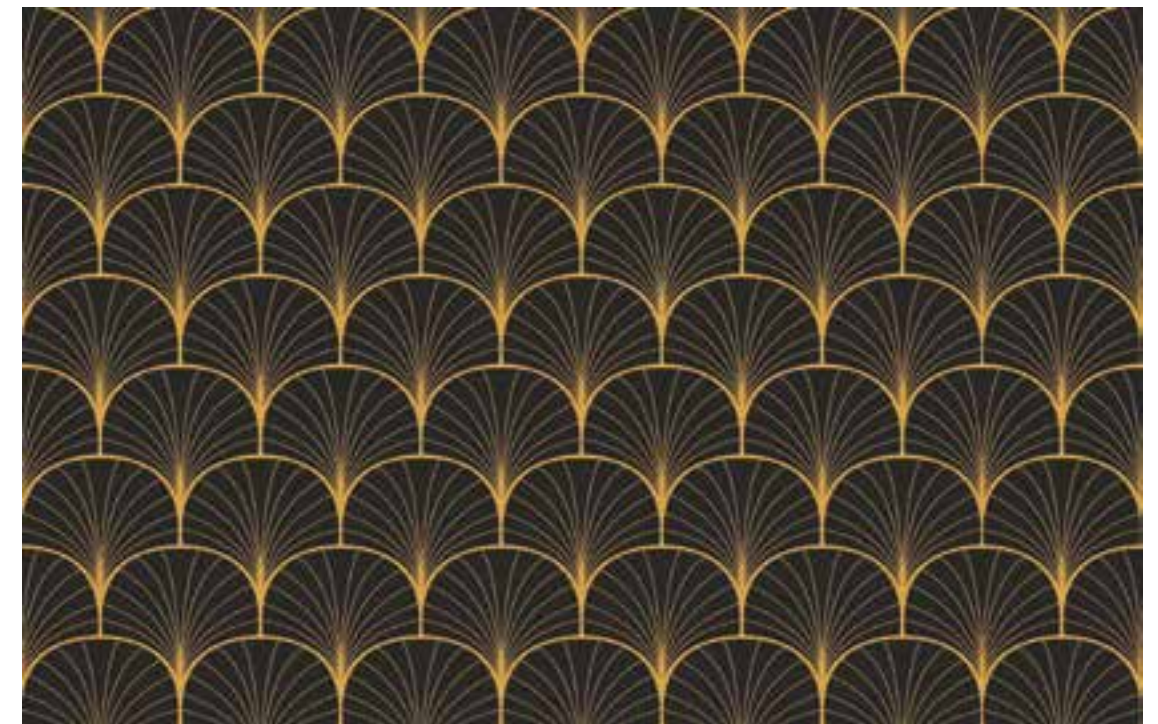
CONTRASTI DI ORO SULLA PARETE.
GOLDEN CONTRASTS ON WALL

RAFFINATE
FIGURE DORATE
RISPLENDONO
IN EGUAL MODO
SU SFONDO
CHIARO E
SFONDO SCURO

*REFINED
GOLDEN
FIGURES
SHINE
ON A LIGHT
OR A DARK
BACKGROUND*



CP0424



CP0442

Materials effect

MATERIALI IMPRESSI SUL MURO

MATERIALS PRINTED ON WALL



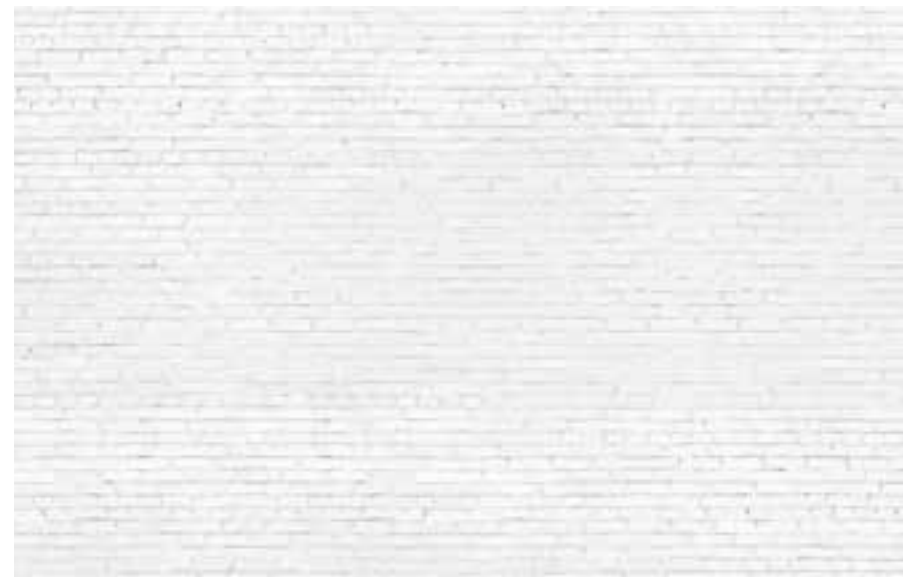
INDUSTRIAL STYLE



CP0476

MURI
DI MATTONCINI
IN DIVERSI
COLORI
E SFUMATURE

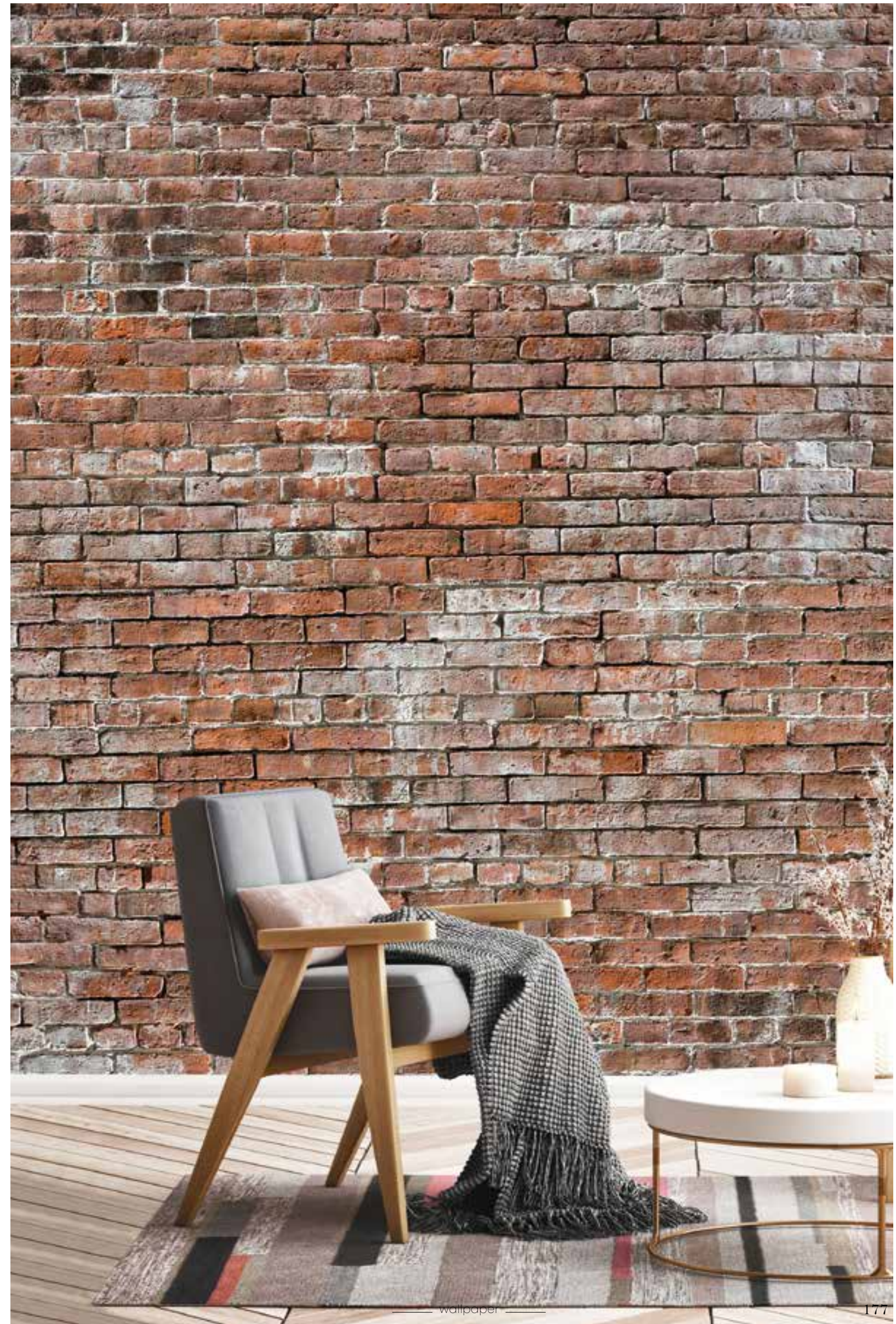
*BRICK WALLS
IN DIFFERENT
COLORS
AND SHADES*



CP0472



CP0474

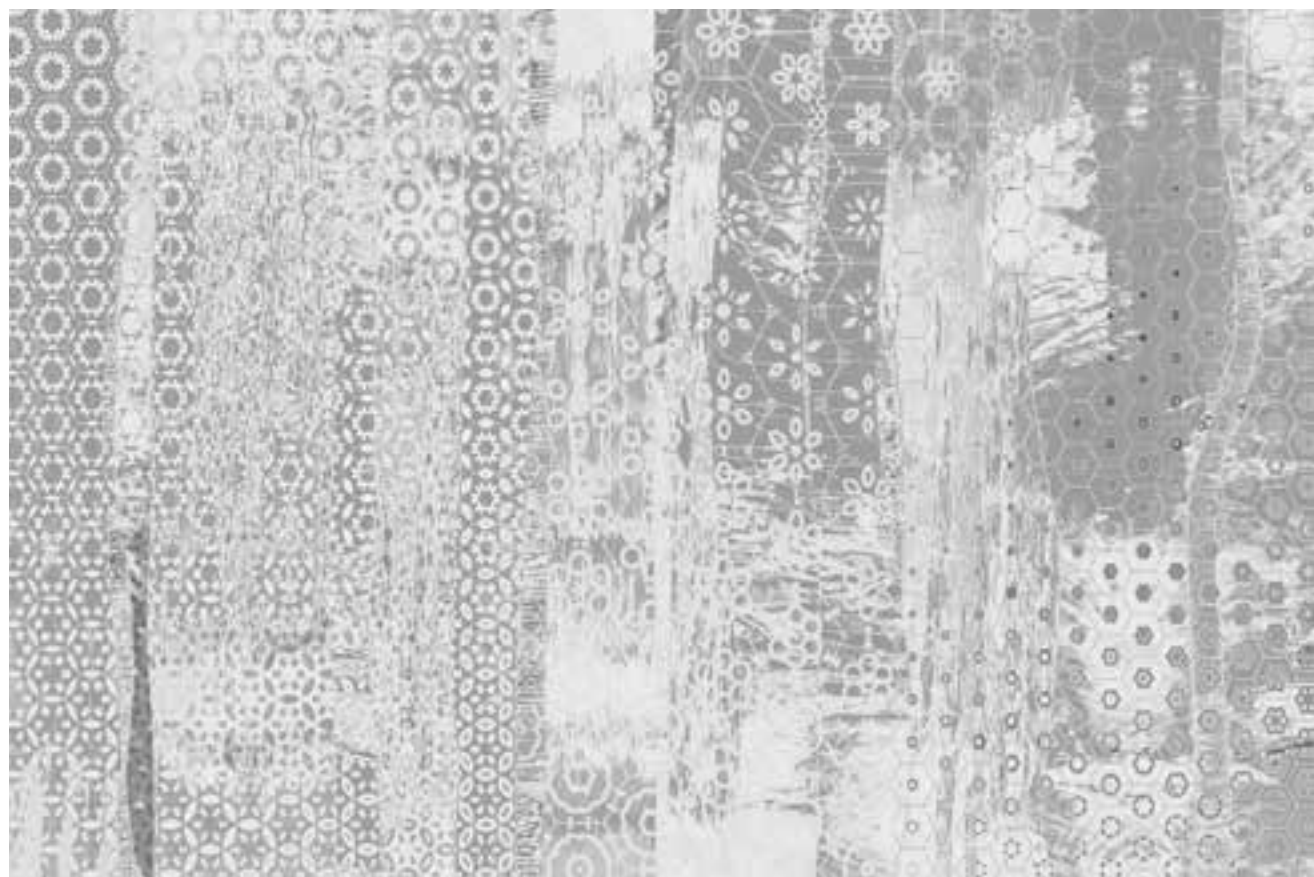




CP0256



CP0254



CP0232

EFFETTO
CONSUMATO
E TONALITA'
OPACHE

*ANTIQUED
EFFECT
AND OPAQUE
SHADES*

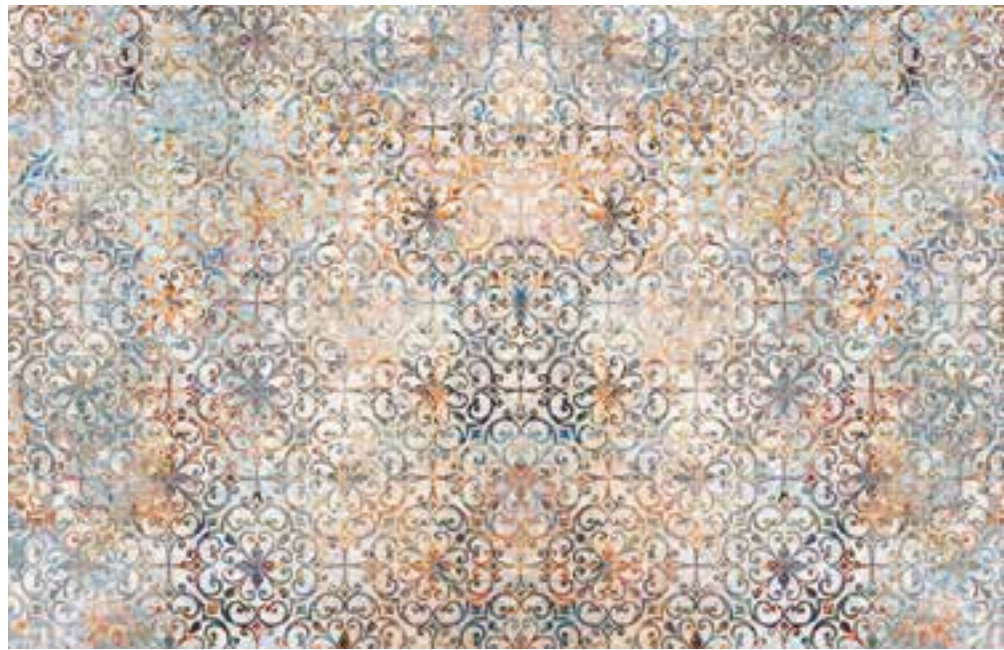


CP0238



CP0262





CP0272

**RIVESTIMENTI
CHE RICHIAMANO
ANTICHE DIMORE**

*COATINGS
THAT RECALL
THE ANCIENT
HOUSES*



CP0270



CP0298





ELEGANTE MARMO BIANCO
IMPATTO ESTETICO MINIMAL

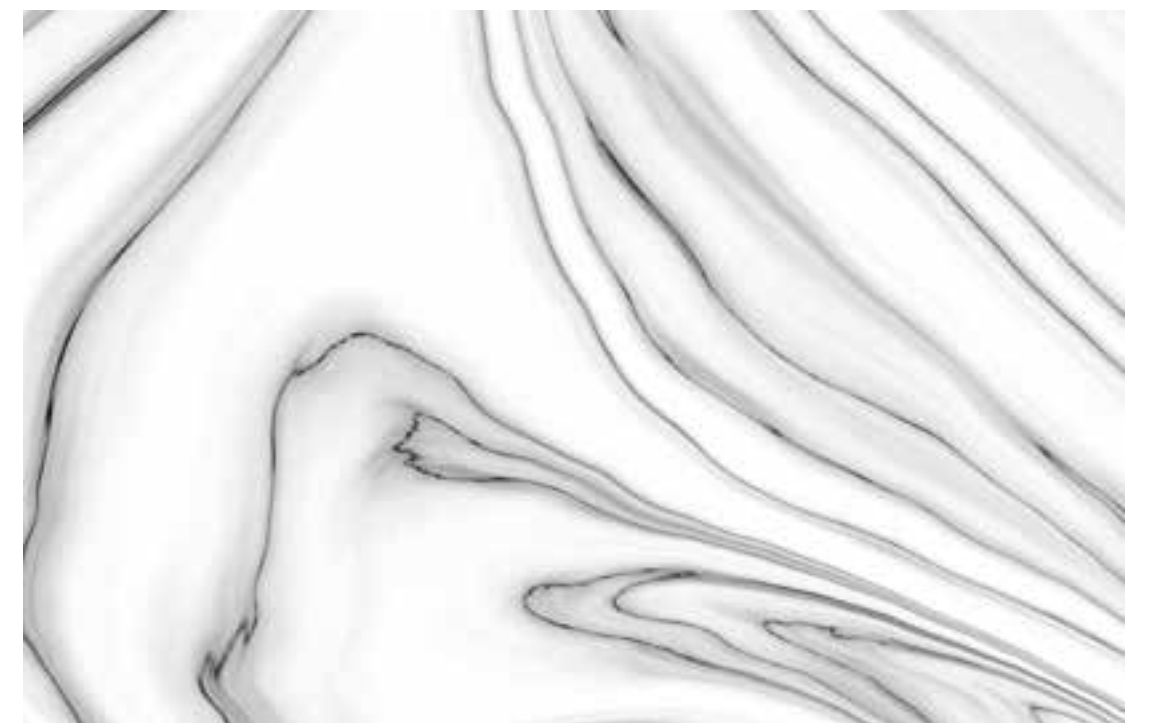
*REFINED WHITE MARBLE
MINIMAL AESTHETIC IMPACT*



CP0450



CP0444



CP0446



L'EFFETTO MARMO
REGALA UN TOCCO
DI RAFFINATEZZA
ALLE PARETI

*THE MARBLE EFFECT
ADDS A TOUCH
OF FINENESS
TO THE WALLS*

CP0454



CP0452



CP0448

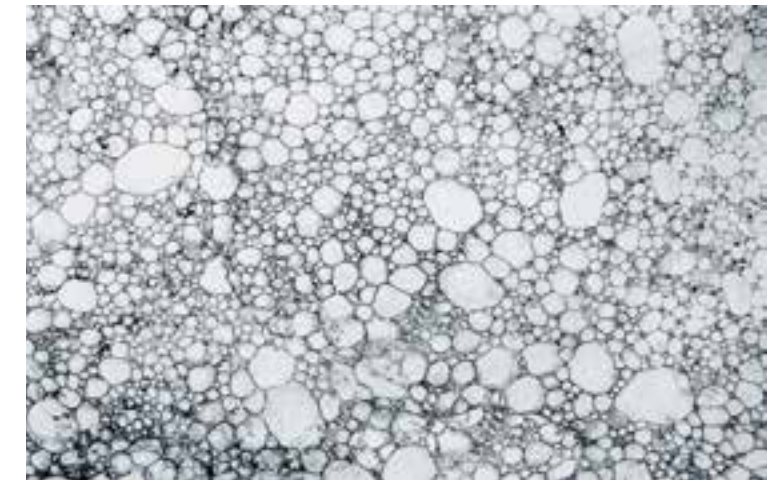




CP0464



CP0462



CP0460

LE VENATURE NATURALI
DELLE PIETRE CREANO
EFFETTI OTTICI
SORPRENDENTI

*NATURAL VEINING
OF STONES CREATE
AMAZING OPTICAL
EFFECTS*



CP0458



CP0464



CP0466

MARMO
DAL FONDO
SCURO CON
SOTTILI
VENATURE
BIANCHE E
AMBRATE

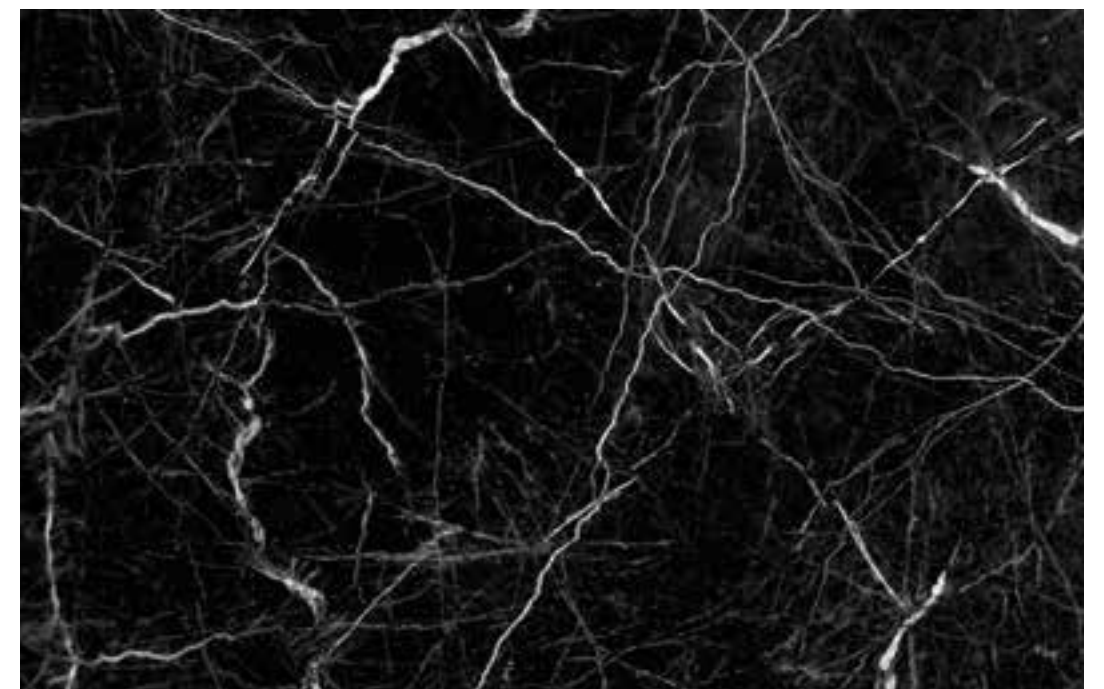
*MARBLE
WITH DARK
BACKGROUND
AND WHITE
AND AMBER
VEININGS*



CP0466

MARMO
NERO
MARQUINA

*BLACK
MARQUINA
MARBLE*



CP0468

— wallpaper —

PARETE OSSIDATA
OXIDIZED WALL



ESTETICA GRUNGE
GRUNGE AESTHETICS



CONTRASTI TRA DELICATI
TONI GRIGIO/TURCHESI
E LAMINA METALLICA ORO

*CONTRASTS BETWEEN DELICATE
RAY / TURKEY TONES
AND GOLD METAL LAMINA*



CP0488



CP0492

EFFETTO MATERICO INVECCHIATO
E SCROSTATO IN DUE DIVERSE TONALITA'

*EMBOSSED ANTIQUED EFFECT
IN TWO DIFFERENT SHADES*



CP0478

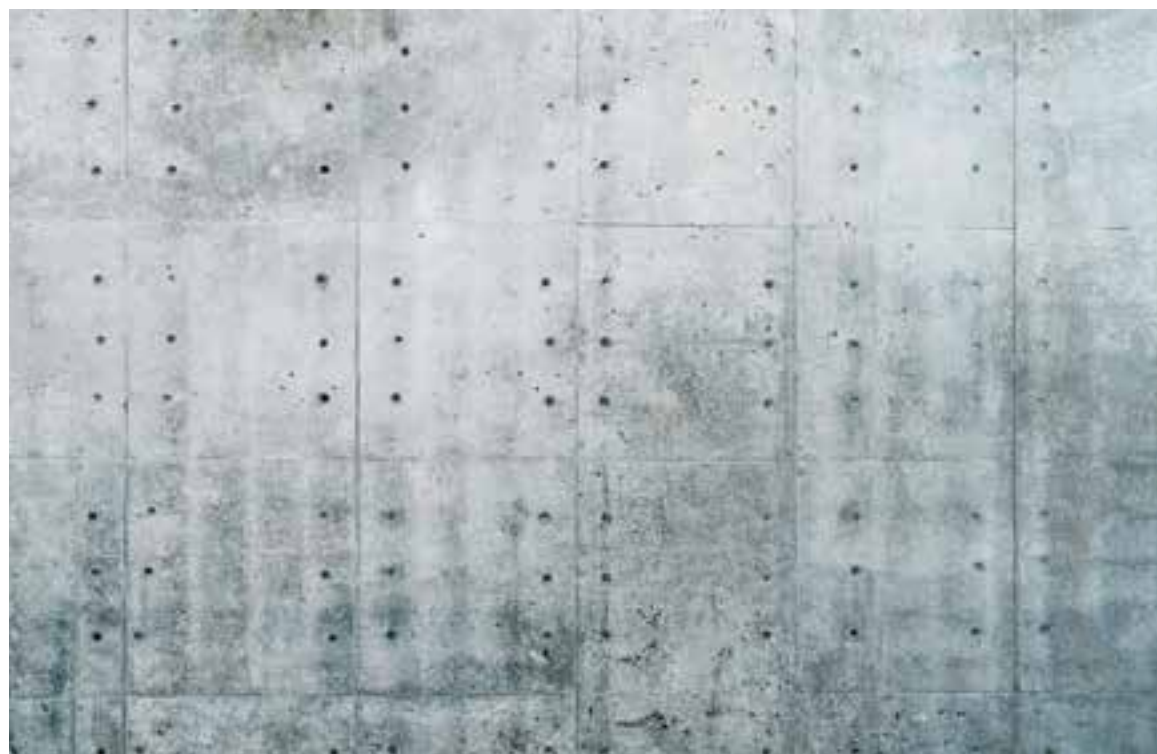


CP0484



STILE METROPOLITANO.
EFFETTO LASTRE DI METALLO
E PARETE DI CEMENTO.

*METROPOLITAN STYLE.
METAL SHEETS AND CEMENT
WALL EFFECT.*



CP0480



CP0482



LEGNO WOOD

ORIGINALI PARETI INTARSIATE
ORIGINAL DECORATED WALLS



CP0494



CP0496



CP0498





Landscapes

PROSPETTIVE MURALI
MURAL PERSPECTIVES



CP0546



CP0528



CP0548

PAESAGGI
SELVAGGI
INVADONO
GLI SPAZI
INTERNI.

*WILD
LANDSCAPES
SWARM THE
INTERNAL
SPACES*



THE CITY

LE PARETI DIVENTANO CARTOLINE IN BIANCO E NERO

THE WALLS BECOME BLACK AND WHITE POSTCARDS



CP0530



CP0532



CP0534

— wallpaper —



CP0536

VISTA SULLA CITTA' CHE NON DORME MAI
VIEW ON THE STILL CITY



CP0538





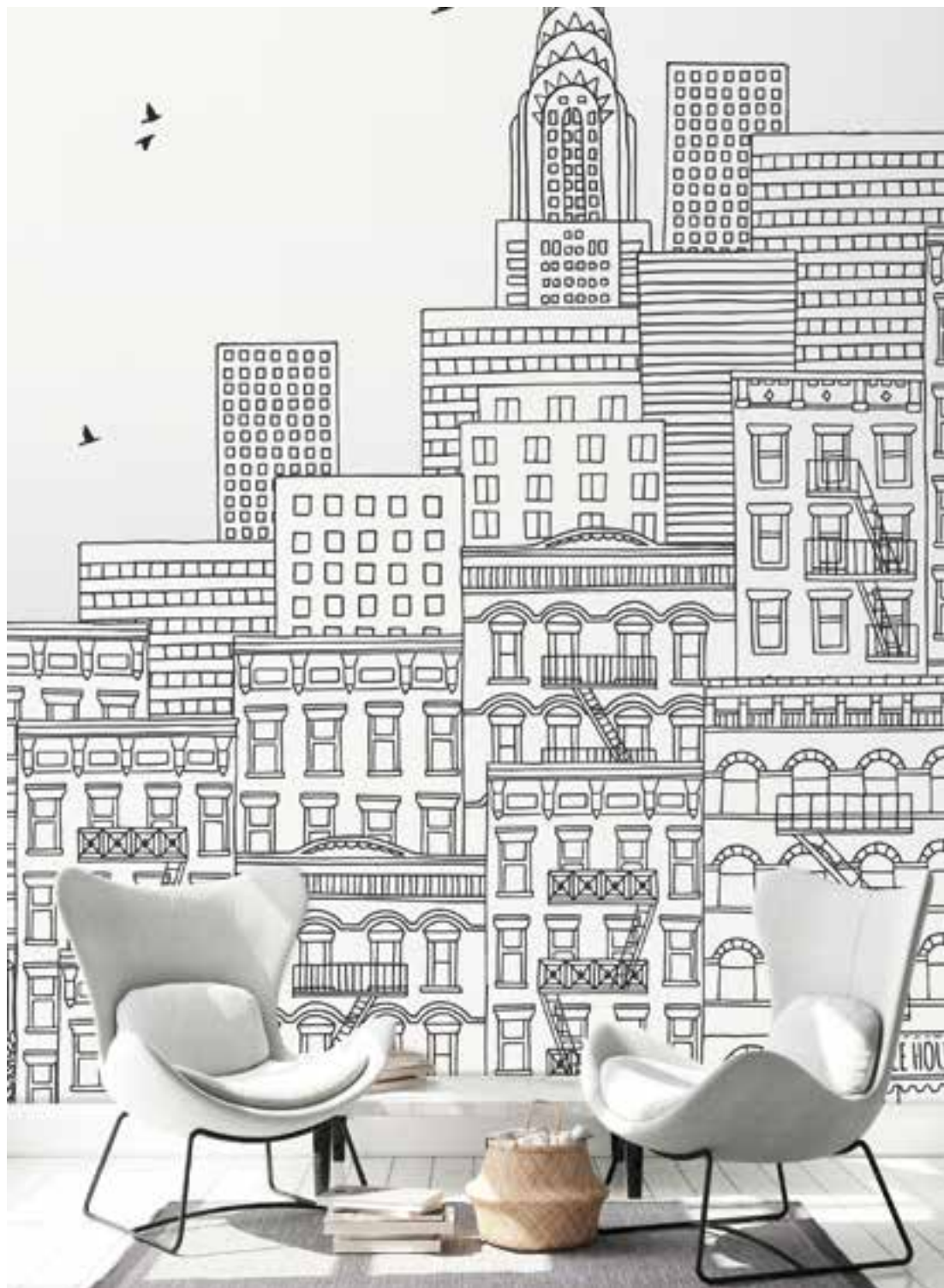
CP0540

PROSPETTIVE LUMINOSE.
LE MILLE LUCI DI NEW YORK.

*BRIGHT PERSPECTIVES.
THE THOUSAND LIGHTS OF NEW YORK.*



CP0542



CP0552



CP0554

**PAESAGGI ALTERNATIVI.
ILLUSTRAZIONI CON EFFETTO
DISEGNO SUL MURO.**

*ALTERNATIVE LANDSCAPES.
ILLUSTRATIONS WITH A DRAWING
EFFECT ON THE WALL.*



CP0550



PER NON PERDERSI...
MAPPA METROPOLITANA.

*FOR NOT LOSING YOUR WAY ...
METROPOLITAN MAP*



CP0556



CP0544

GRAFICA DELLA CITTÀ
CITY GRAPHICS



Kids

PARETI DA SOGNO
DREAMING WALL





IL MONDO
CON GLI OCCHI
DEI BAMBINI

*THE WORLD
THROUGH
THE CHILDREN
EYES*

CP0568



CP0566

SPAZIO, CIELO, COLLINE:
GRAFICHE SEMPLICI
E COLORI PASTELLO.

*SPACE, SKY, HILLS:
SIMPLE GRAPHICS
AND PASTEL COLORS.*



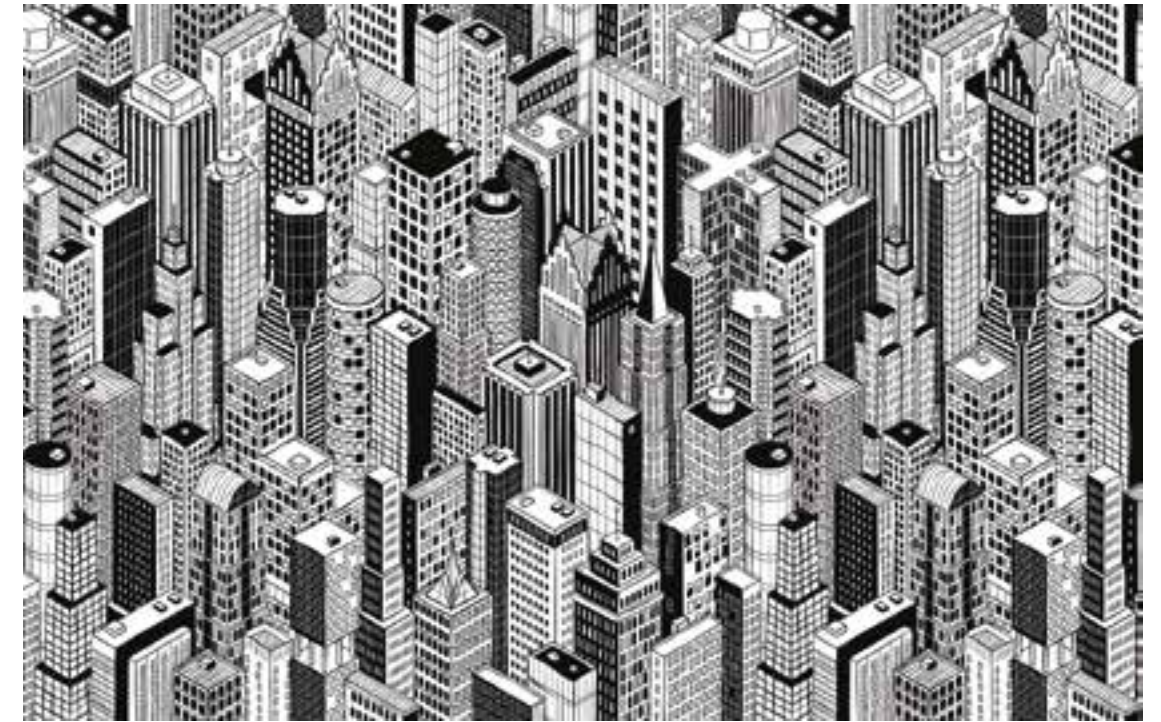
CP0560



CP0562

SOGNARE IN GRANDE.

A GREAT DREAM



CP0596



CP0578



IL CIELO IN UNA STANZA.
THE SKY IN A ROOM



CP0584



CP0582



CP0580



CP0534



CP0570



CP0588



CP0576



CP0586

IL ROSA NON PUO' MANCARE,
MA ANCHE UN ELEGANTE TOCCO DI NERO.

*THE ROSE CANNOT MISS IT,
BUT ALSO WITH AN ELEGANT TOUCH OF BLACK.*



CP0590



CP0594



CP0564



CP0592

LE PARETI SEMBRANO CARTONI ANIMATI
GRAZIE ALLE DIVERTENTI ILLUSTRAZIONI
E AI COLORI SGARGIANTI

*THE WALLS LOOK LIKE CARTOONS
CARRIED OUT WITH FUNNY AND FLOSSY
COLOURED ILLUSTRATIONS*





RIGHE
CERCHI
TRIANGOLI
GEOMETRIE
PER UNO STILE
GIOCOSE MA
ESSENZIALE



CP0572

*ROWS
CIRCLES
TRIANGLES
GEOMETRIES
FOR A FUNNY,
BUT ESSENTIAL
STYLE*



CP0574



Di seguito troverete tutte le immagini delle nostre carte da parati riepilogate in miniature fotografiche.

Tutte le immagini hanno le proporzioni di una parete di 5 metri di larghezza per 3,20 metri di altezza e possono essere ridotte o ingrandite per adeguarsi alla misura della vostra parete.

Per coprire pareti con misure o proporzioni particolari, potrebbe essere necessario utilizzare solo una parte dell'immagine scelta. Per questo, accanto ad ogni miniatura, troverete due linee grafiche divisorie che vi aiuteranno nel taglio dell'immagine. Basterà comunicarci le misure scelte e avrete la sezione di immagine che vi serve.

Below please find our wallpapers images, summarized in photographic miniatures.

All the images were balanced according to a wall of 5 meters wide x 3.20 meters high and can be reduced or enlarged to fit your wall size.

In order to cover walls with particular sizes or proportions, it may be necessary to use only a part of the chosen image.

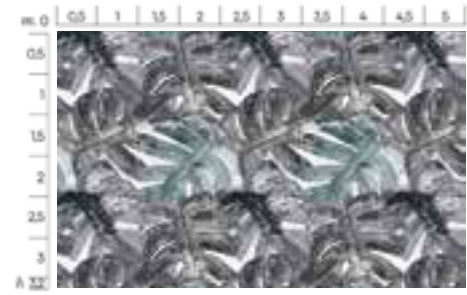
For this reason you should find two graphic dividing lines next to each miniature that will help you in cutting the image. It will be enough for you to tell us the chosen sizes and you will have the image portion you should need.



CPO102



CPO100



CPO264



CPO132



CPO120



CPO104



CPO170



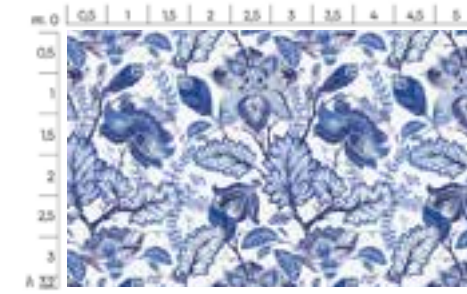
CPO212



CPO122



CPO136



CPO140



CPO152



CPO290



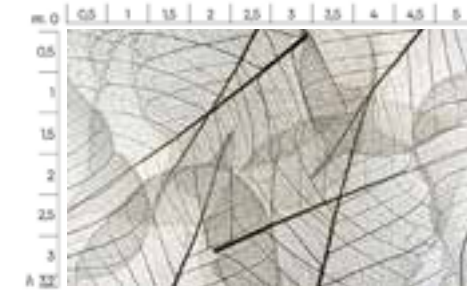
CPO228



CPO260



CPO110



CPO112



CPO220



CPO216



CPO214



CPO116



CPO224



CPO130



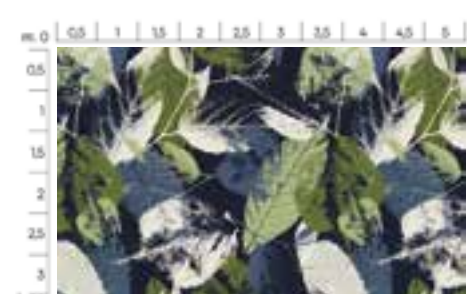
CPO222



CPO226



CPO154



CPO146



CPO108



CPO106



CPO230



CPO266



CPO138



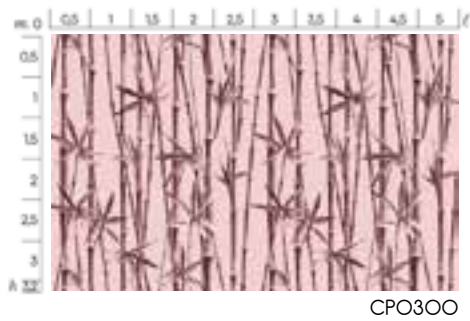
CPO150



CPO218



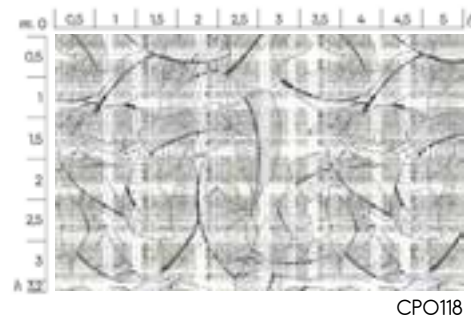
CPO134



CPO300



CPO158



CPO118



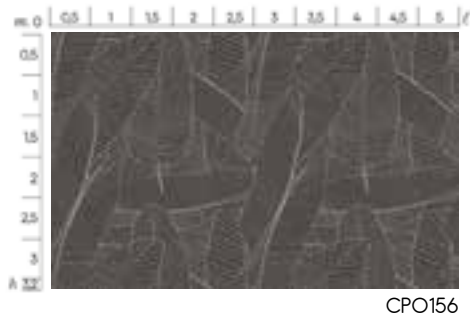
CPO202



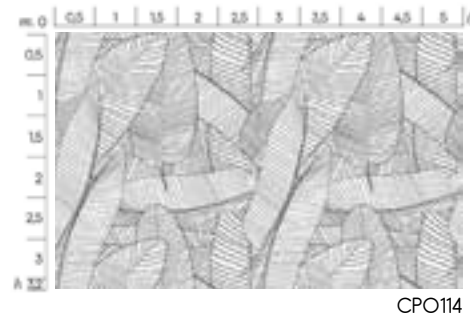
CPO204



CPO172



CPO156



CPO114



CPO178



CPO160



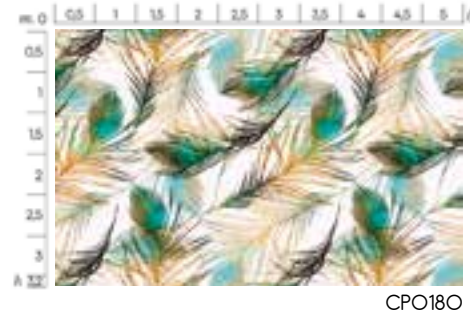
CPO286



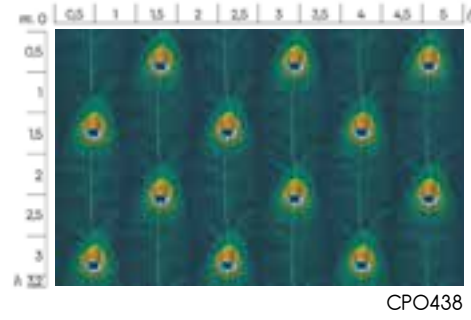
CPO128



CPO184



CPO180



CPO438



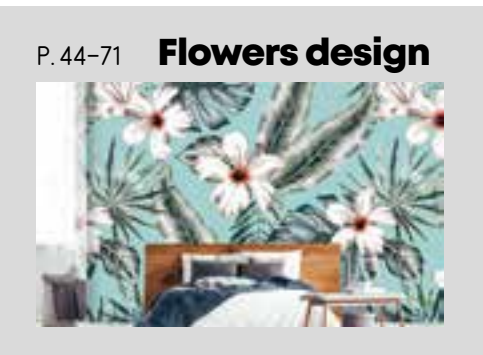
CPO276



CPO142



CPO144



P. 44-71 **Flowers design**



CPO278



CPO288



CPO162



CPO182



CPO148



CPO208



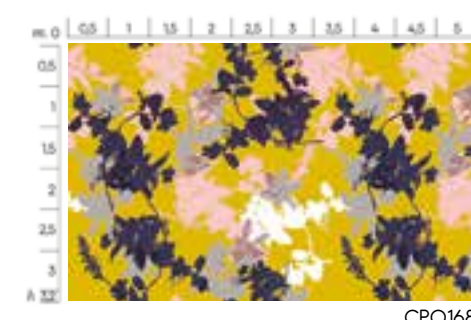
CPO206



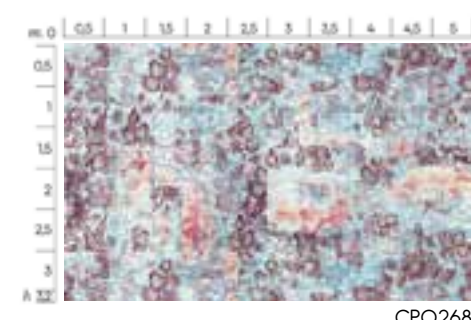
CPO176



CPO164



CPO168



CPO268



CPO392



CPO192



CPO280



CPO274



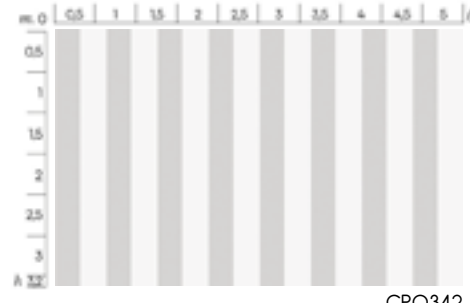
CPO126



CPO124

P.72-89

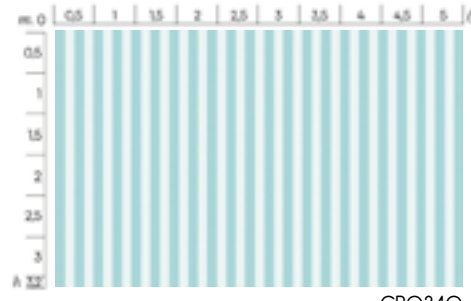
Righe



CPO342



CPO338



CPO340



CPO336



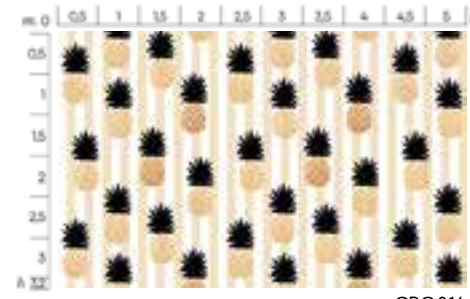
CPO330



CPO332



CPO312



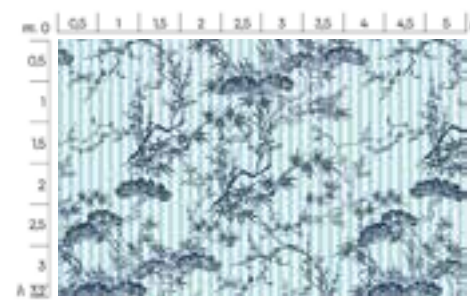
CPO316



CPO320



CPO318



CPO326

P.90-99

Animals



CPO210



CPO198



CPO282



CPO190



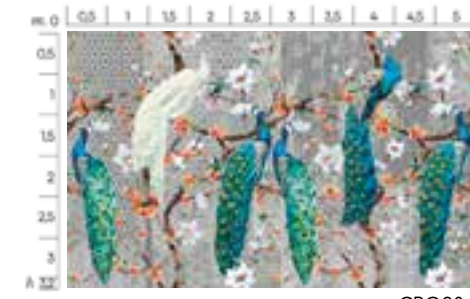
CPO188



CPO186



CPO196



CPO284



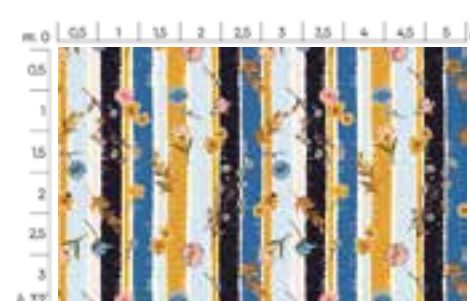
CPO200



CPO314



CPO328



CPO324

P.100-115

Black&white



CPO246



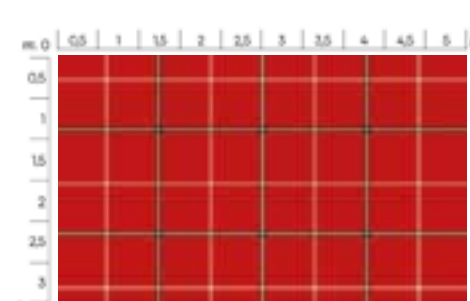
CPO242



CPO322



CPO334



CPO335



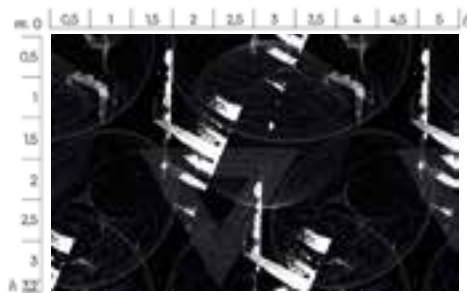
CPO240



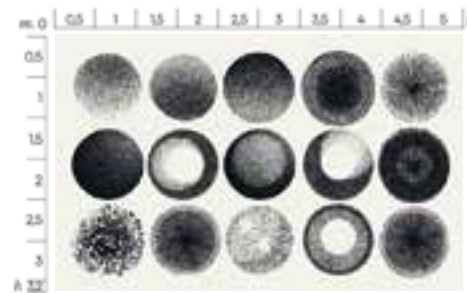
CPO344



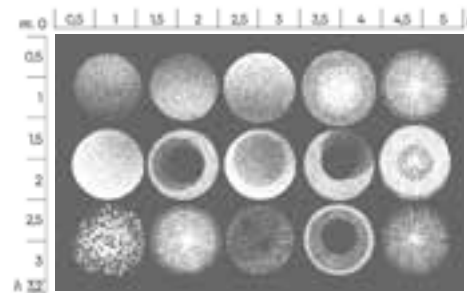
CPO346



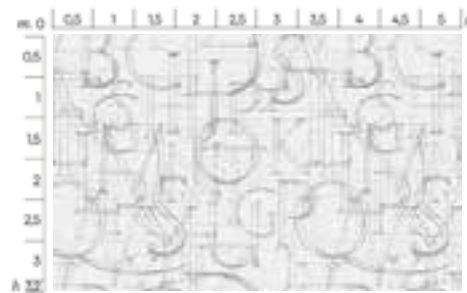
CPO348



CPO350



CPO352



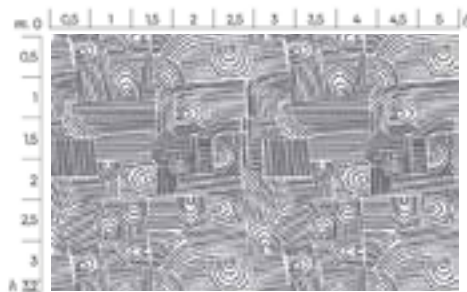
CPO358



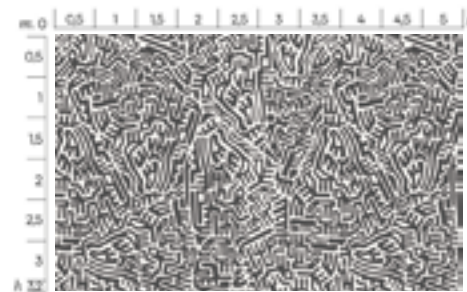
CPO258



CPO376



CPO418



CPO420



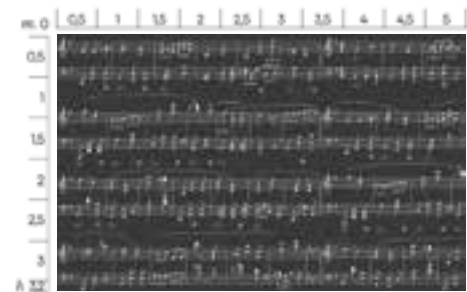
CPO354



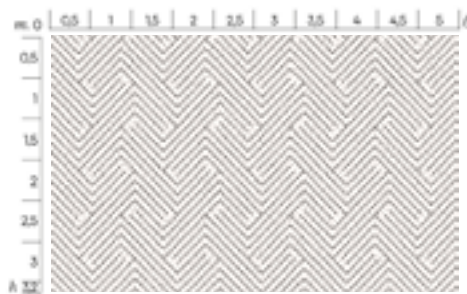
CPO362



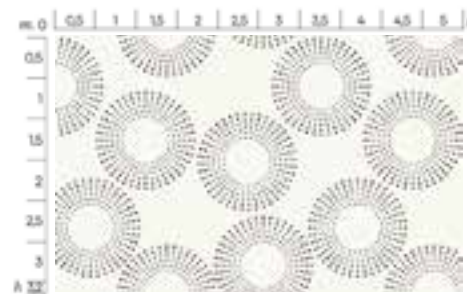
CPO378



CPO370



CPO410



CPO412



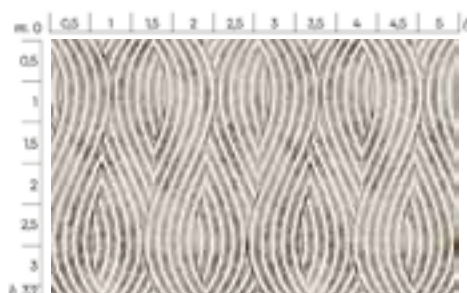
CPO374



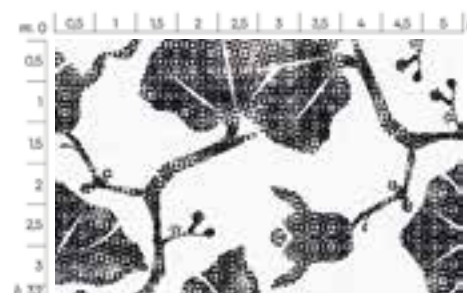
CPO384



CPO386



CPO252



CPO244



CPO390



CPO396



CPO388



CPO364



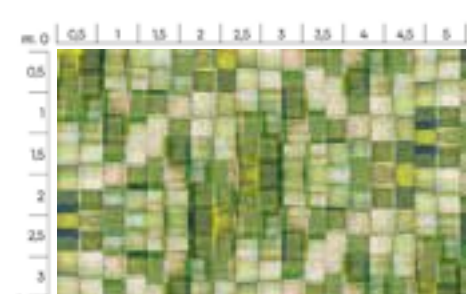
CPO366



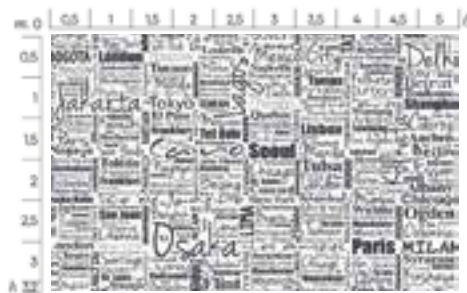
CPO422



CPO296



CPO292



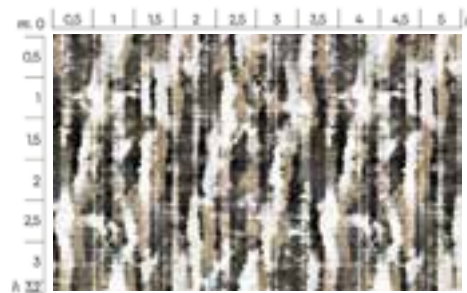
CPO360



CPO368



CPO356



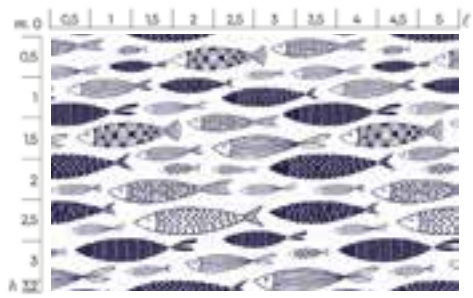
CPO250



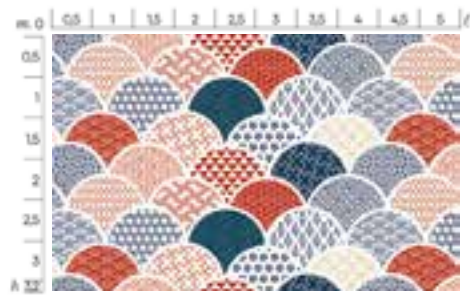
CPO398



CPO400



CPO372



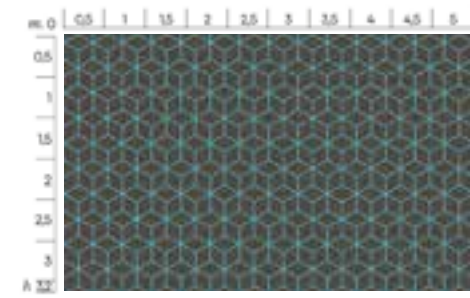
CPO428



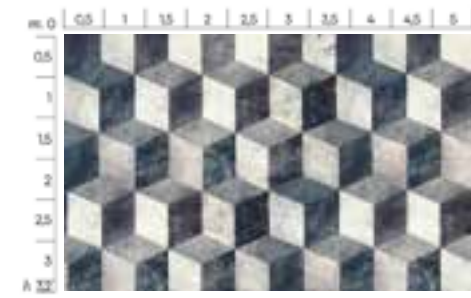
CPO426



CPO294



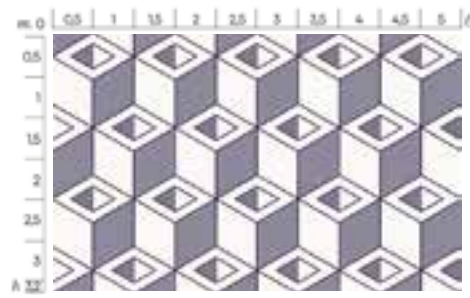
CPO440



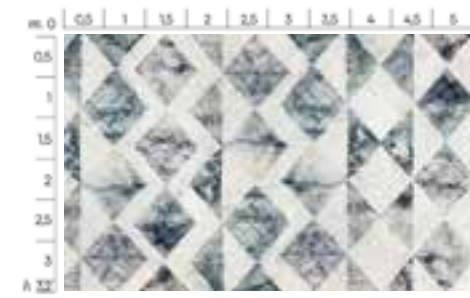
CPO236



CPO248



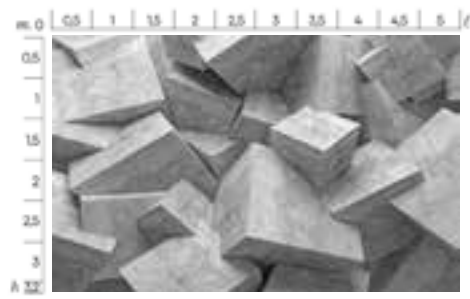
CPO414



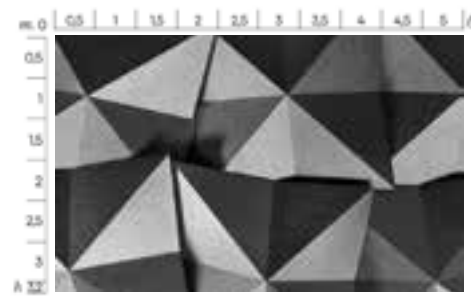
CPO234



CPO416



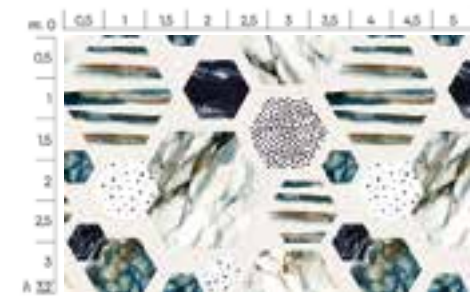
CPO518



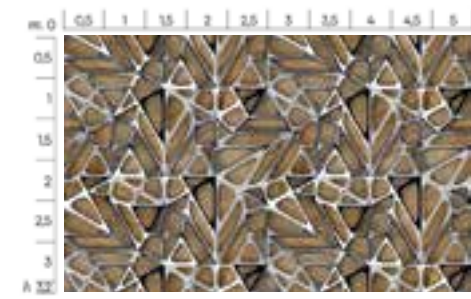
CPO520



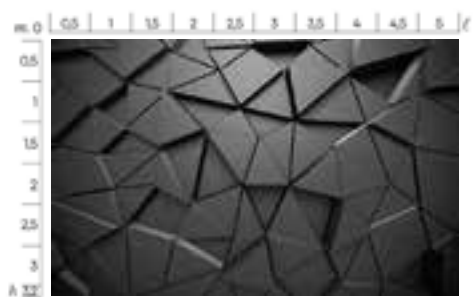
CPO382



CPO380



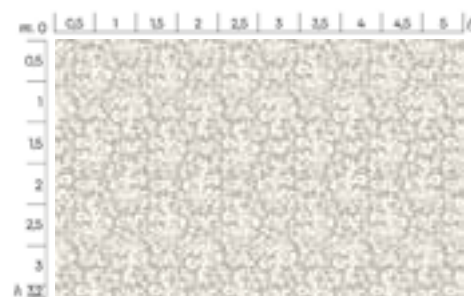
CPO526



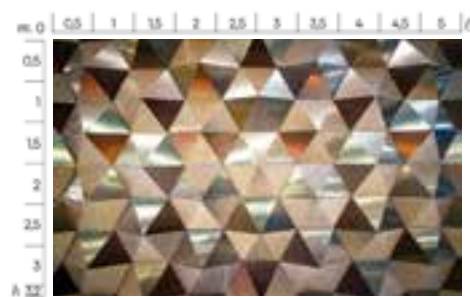
CPO522



CPO402



CPO408



CPO524



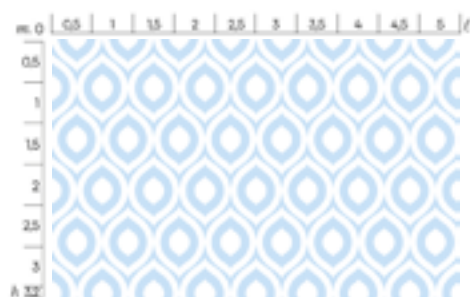
CPO510



CPO504



CPO406



CPO430



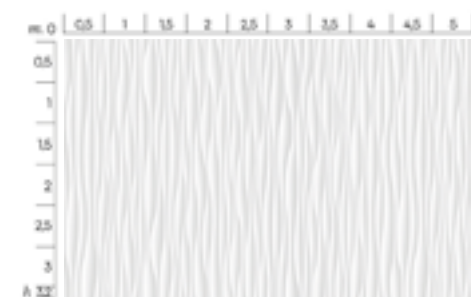
CPO434



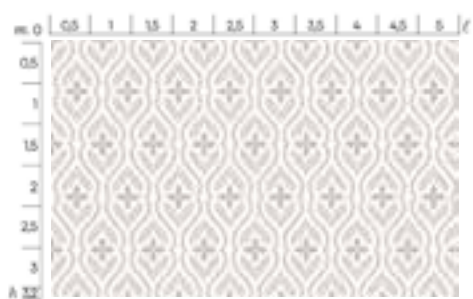
CPO512



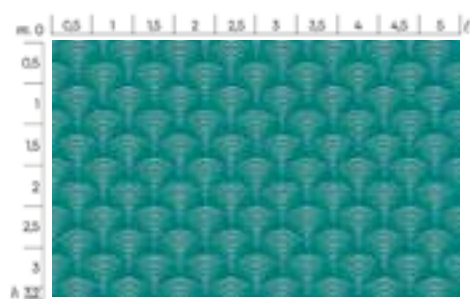
CPO500



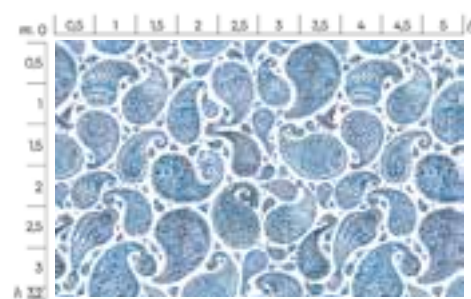
CPO506



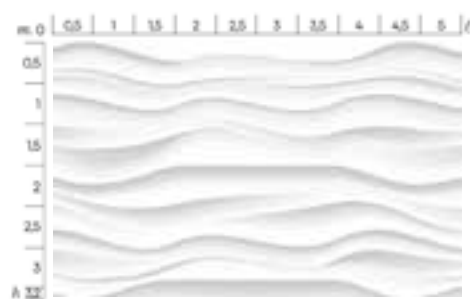
CPO404



CPO436



CPO432



CPO508



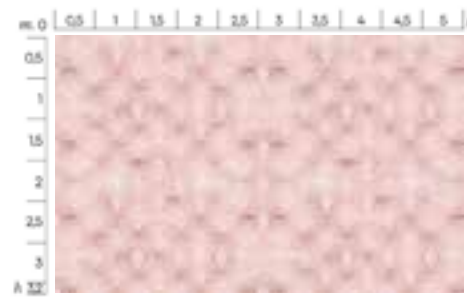
CPO516



CPO502



CPO302



CPO304



CPO272



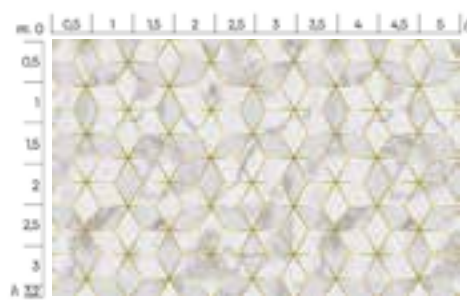
CPO270



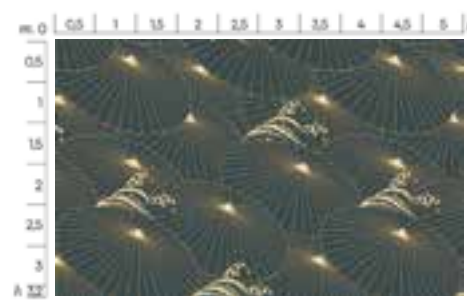
CPO298



CPO306



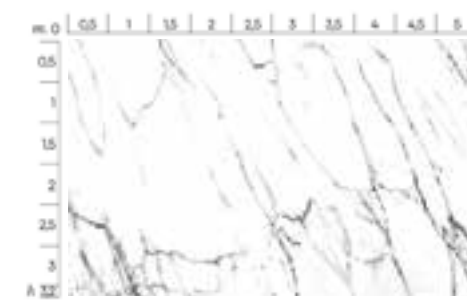
CPO514



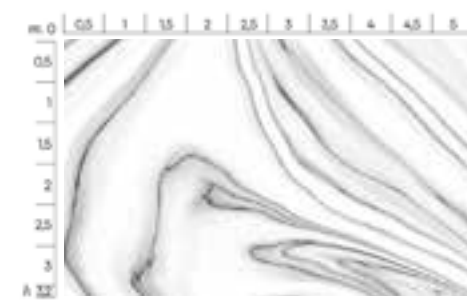
CPO310



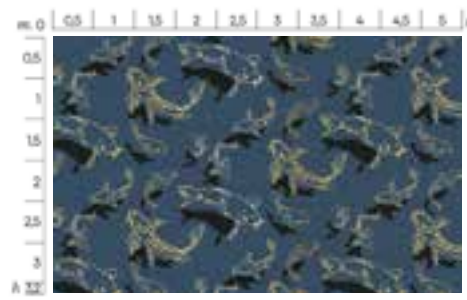
CPO450



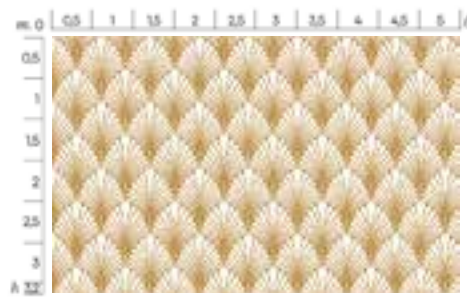
CPO444



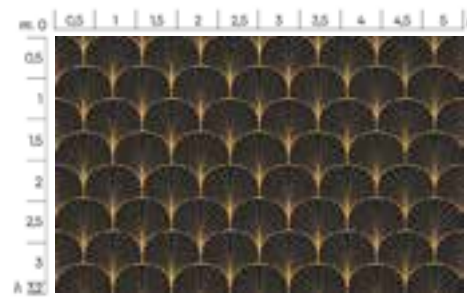
CPO446



CPO308



CPO424



CPO442



CPO454



CPO452



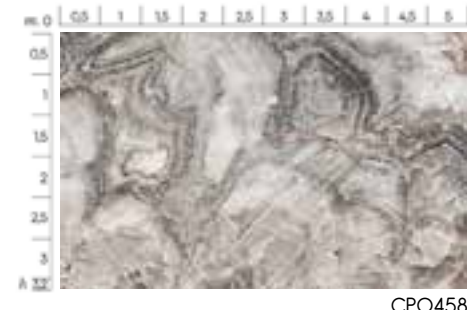
CPO448



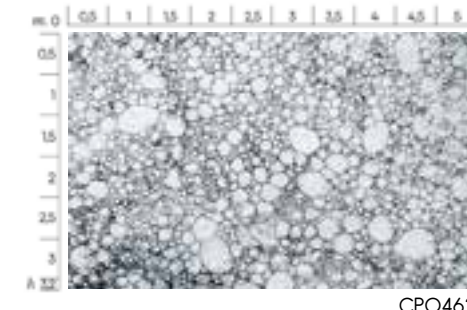
CPO476



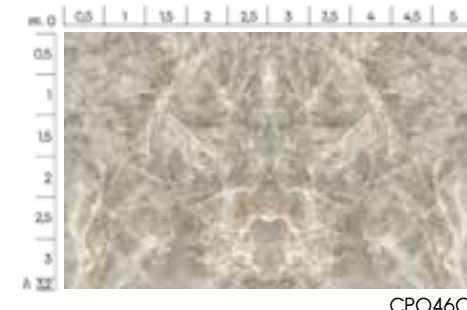
CPO472



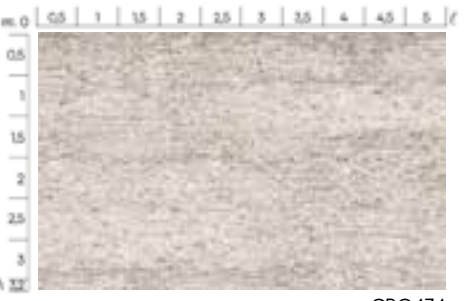
CPO458



CPO462



CPO460



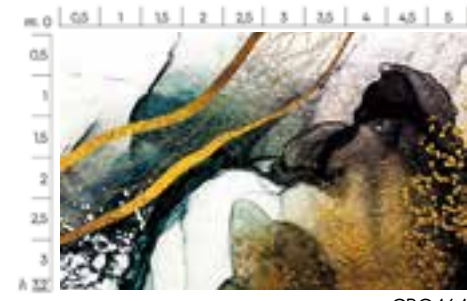
CPO474



CPO256



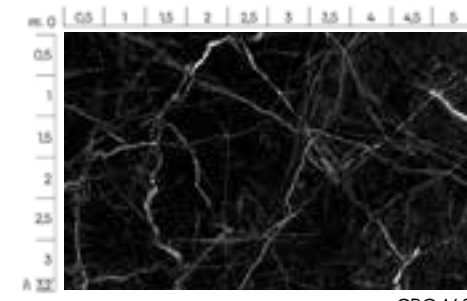
CPO254



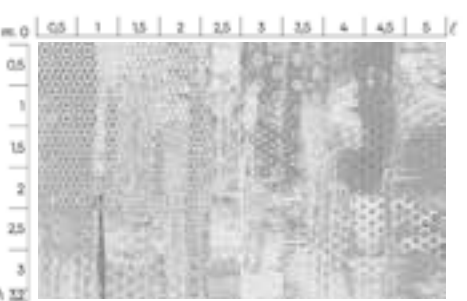
CPO464



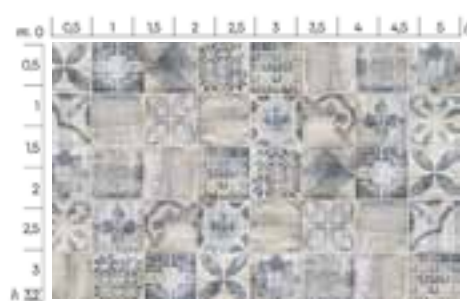
CPO466



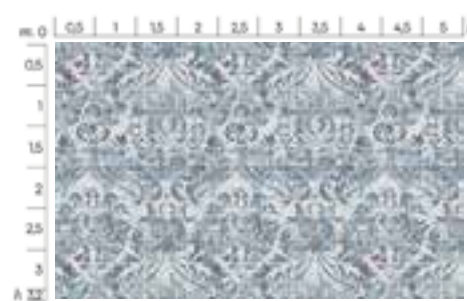
CPO468



CPO232



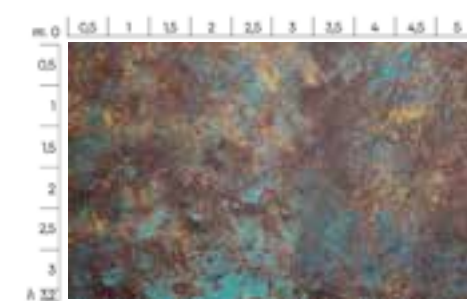
CPO238



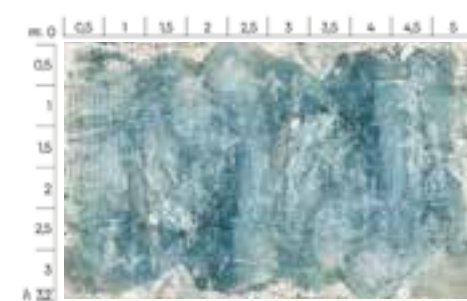
CPO262



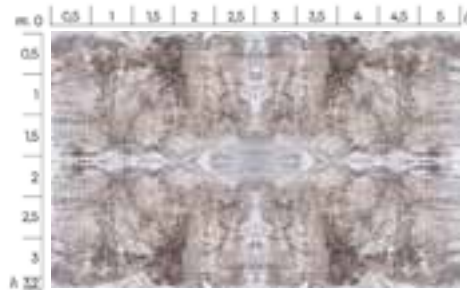
CPO492



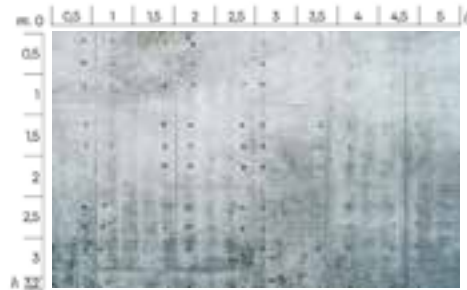
CPO488



CPO478



CPO484



CPO480



CPO482



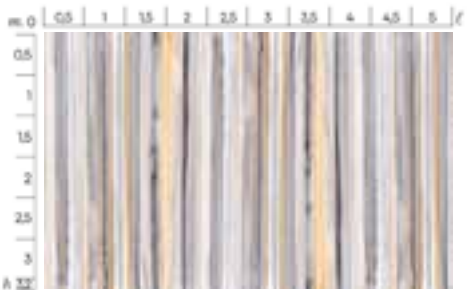
CPO554



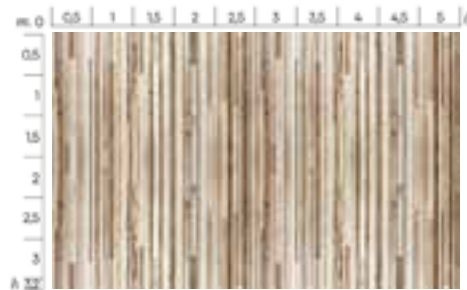
CPO550



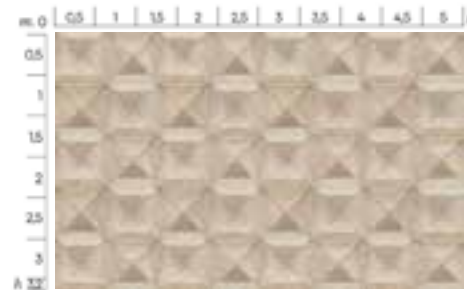
CPO556



CPO494



CPO496



CPO498



CPO544



CPO546



CPO528



CPO568



CPO566



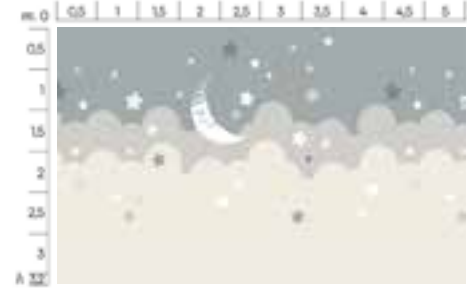
CPO548



CPO530



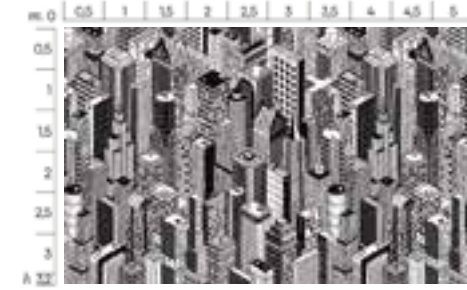
CPO532



CPO560



CPO562



CPO596



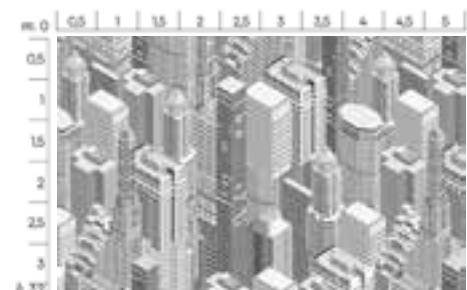
CPO534



CPO536



CPO538



CPO558



CPO584



CPO582



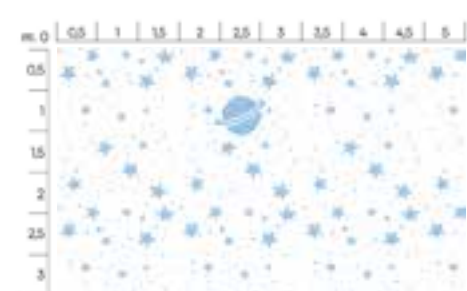
CPO540



CPO542



CPO552



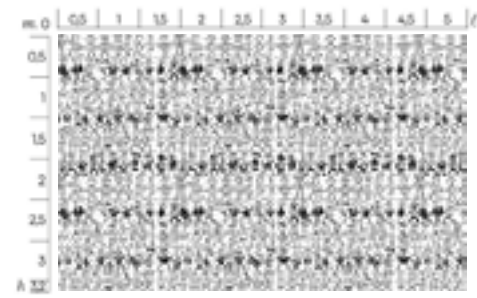
CPO580



CPO578



CPO570



CPO588



CPO576



CPO586



CPO590



CPO594



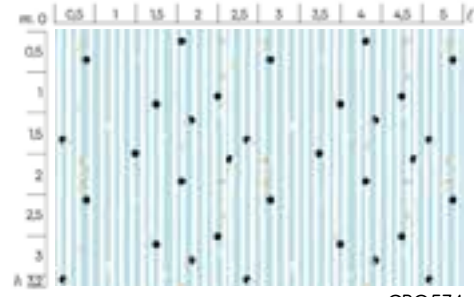
CPO564



CPO592



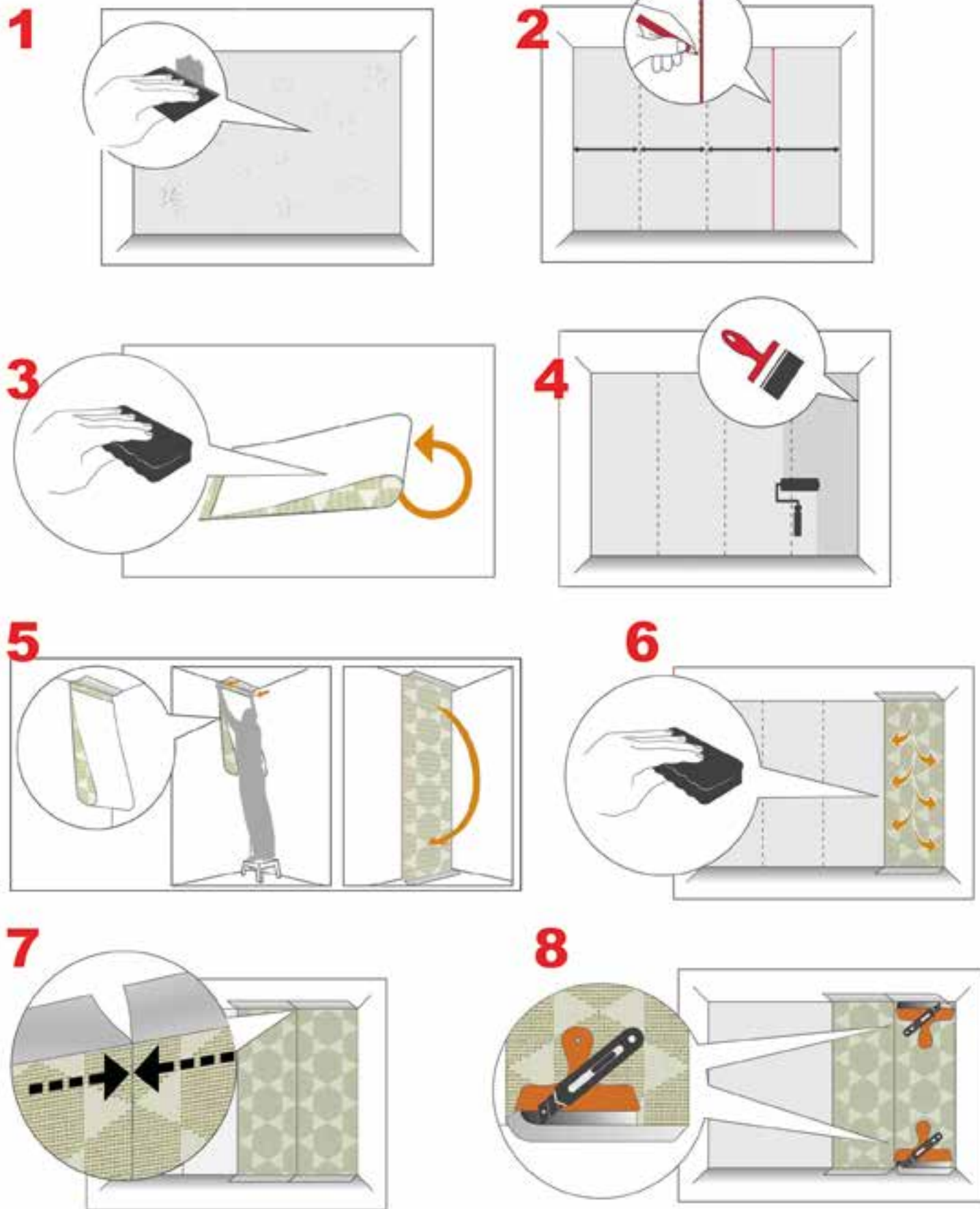
CPO572



CPO574

CONSIGLI UTILI USEFUL TIPS

COME ORDINARE E POSARE LE NOSTRE CARTE. HOW TO ORDER AND INSTALL OUR WALLPAPERS.



NOTA IMPORTANTE: per garantire un prodotto privo di difetti, tutte le carte da parati PINTDECOR vengono sottoposte ad un rigido controllo qualità. Tuttavia prima di procedere alla posa della carta da parati, è necessario verificare in ogni sua parte che non ci siano eventuali imperfezioni.

ATTENZIONE: non si accettano reclami dopo che la carta da parati è stata già applicata alla parete.

IMPORTANT NOTE: In order to guarantee a defect-free product, all PINTDECOR wallpapers are subjected to strict quality control. However before wallpaper installation, please check the product integrity and that there are no imperfections in all its parts.

ATTENTION: we do not accept complaints after the wallpaper application on the wall.

Le carte da parati PINTDECOR vi offrono la possibilità di ricoprire anche pareti di grandi dimensioni, sono infatti costituite da più strisce che, applicate insieme andranno a formare la superficie da voi richiesta. Prima di iniziare leggere attentamente la guida di montaggio che vi aiuterà ad applicare la vostra carta da parati senza problemi.

PINTDECOR wallpapers offer you the possibility of covering even large walls, as they are made up of several strips which will form the required surface, when applied together. Before starting, please read the assembly guide carefully: this will help you to apply your wallpaper without problems.

utensili utili useful tools

Colla per carta da parati - Secchio con acqua
Rullo per carta da parati - Taglierino - Livella
Matita - Metro - Panno o spugna morbida

*Wallpaper glue - Bucket with water - Wallpaper roller
Cutter - Level - Pencil - Meter - Cloth or soft sponge*

istruzioni di montaggio assembly instructions

1 Per una riuscita ottimale preparare la parete ricordandosi di smontare le placche delle prese di corrente, chiodi o altre sporgenze che potrebbero invalidare la buona riuscita del lavoro. Se necessario stuccare eventuali imperfezioni del muro, carteggiando in modo che la superficie sia uniforme e asciutta, priva di residui di qualunque genere.

2 Prendere le misure con l'ausilio di una livella o un metro e con una matita, segnare i punti dove posizionare le strisce.

3 Inumidire il retro del materiale usando acqua pulita e una spugna apposita per bagnarlo in modo uniforme. Disporre a terra le strisce nell'ordine di applicazione, sulla parte superiore del rotolo troverete indicato il numero della striscia.

4 Mescolare la colla con l'acqua e stenderla uniformemente sulla parete, è sempre meglio lasciare la colla abbastanza densa poiché può essere eventualmente diluita in seguito.

5 Posare la prima striscia sulla parete iniziando dalla parte superiore del muro (vedi linea tratteggiata), srotolare la striscia verso il basso seguendo i segni tracciati in precedenza con la matita sulla parete, verificare con l'ausilio della livella di aver applicato perfettamente in verticale la prima striscia, se necessario, scostare dal muro e allineare nuovamente. La giusta attenzione nella posa della prima striscia, garantisce una più semplice applicazione per le strisce successive.

6 Per evitare bolle d'aria o altre imperfezioni, far aderire bene la carta alla parete utilizzando un rullo o una spugna asciutta per esercitare pressione dall'interno verso l'esterno.

7 Prendete la seconda striscia ed accostarla alla prima senza sovrapporla e facendo attenzione che combacino perfettamente. Eseguire lo stesso metodo con le strisce successive.

8 Rifilare con un taglierino le parti di carta in eccesso aiutandovi con un righello o una spatola rigida. A lavoro appena completato, prima che asciughi, pulire la carta da residui di colla, usando una spugna inumidita. Non utilizzare altri materiali, perché potrebbero danneggiare la carta da parati.

1 For an excellent result prepare the wall remembering to remove the sockets plates, nails or other protrusions that could invalidate the success of the work. If necessary, level all imperfections out on the wall by sanding the surface and making it uniform and dry, free of possible residues.

2 Measure with a level or a meterstick and mark the points where to place the strips with a pencil.

3 Moisten the back of the remaining wallpaper by using clean water and a special sponge. Arrange the strips on the ground in the order of application: you will find the number marked of the strips on the top of the roll.

4 Mix the glue with water and spread it evenly on the wall. It is always recommended to leave the glue thick enough to dissolve it eventually later.

5 Lay the first strip on the wall starting from the upper part of the wall (see dotted line), unroll the strip downward following the signs previously marked with the pencil on the wall, check with the level of having properly applied the first strip upright. If necessary, move away from the wall and apply it again. The right attention in laying the first strip, guarantees an easier application for next strips.

6 Stick the paper properly to the wall using a roller or a dry sponge and pressing it from inside to outside to avoid air bubbles or other imperfections.

7 Take the second strip and place it next to the first one without overlapping it, making sure they match perfectly. Perform the same method with next strips.

8 Cut off the exceeding paper pieces with a cutter, helping yourself with a ruler or a rigid spatula. When the work is just finished, however before it dries, wipe the paper from remaining glue by using a damp sponge. Do not use other materials as they could damage the wallpaper.

per ulteriori info contattate il nostro Servizio clienti
Tel. +39 0541 659186 - commitalia@adria-art.com
oppure export@adria-art.com

For additional details please contact our Customer Service
Ph. +39 0541 659186 - export@adria-art.com
or commitalia@adria-art.com

CODICE	PAGINA
CP0100	12
CP0102	12
CP0104	12
CP0106	32
CP0108	32
CP0110	28
CP0112	28
CP0114	39
CP0116	28
CP0118	36
CP0120	24
CP0122	25
CP0124	71
CP0126	71
CP0128	60
CP0130	31
CP0132	23
CP0134	34
CP0136	26
CP0138	22
CP0140	26
CP0142	64
CP0144	64
CP0146	32
CP0148	65
CP0150	32
CP0152	15
CP0154	20
CP0156	39
CP0158	36
CP0160	58
CP0162	64
CP0164	66
CP0168	67
CP0170	12
CP0172	58
CP0176	52
CP0178	40
CP0180	42
CP0182	65
CP0184	40
CP0186	97
CP0188	94
CP0190	94
CP0192	54
CP0196	97
CP0198	92
CP0200	98
CP0202	56
CP0204	56
CP0206	50
CP0208	50
CP0210	92
CP0212	15
CP0214	18
CP0216	18
CP0218	34
CP0220	18
CP0222	20
CP0224	30
CP0226	20

CODICE	PAGINA
CP0228	16
CP0230	20
CP0232	180
CP0234	154
CP0236	152
CP0238	180
CP0240	102
CP0242	102
CP0244	115
CP0246	102
CP0248	138
CP0250	136
CP0252	115
CP0254	179
CP0256	178
CP0258	12
CP0260	26
CP0262	180
CP0264	23
CP0266	21
CP0268	68
CP0270	182
CP0272	182
CP0274	68
CP0276	64
CP0278	46
CP0280	54
CP0282	94
CP0284	98
CP0286	58
CP0288	48
CP0290	16
CP0292	136
CP0294	151
CP0296	135
CP0298	182
CP0300	34
CP0302	168
CP0304	168
CP0306	168
CP0308	172
CP0310	172
CP0312	78
CP0314	82
CP0316	78
CP0318	80
CP0320	80
CP0322	87
CP0324	86
CP0326	82
CP0328	84
CP0330	76
CP0332	76
CP0334	88
CP0335	88
CP0336	64
CP0338	64
CP0340	64
CP0342	64
CP0344	104
CP0346	104

CODICE	PAGINA
CP0348	104
CP0350	106
CP0352	107
CP0354	110
CP0356	120
CP0358	123
CP0360	120
CP0362	125
CP0364	118
CP0366	118
CP0368	120
CP0370	127
CP0372	137
CP0374	112
CP0376	125
CP0378	126
CP0380	157
CP0382	156
CP0384	130
CP0386	130
CP0388	133
CP0390	132
CP0392	52
CP0396	132
CP0398	136
CP0400	137
CP0402	144
CP0404	146
CP0406	144
CP0408	144
CP0410	110
CP0412	110
CP0414	152
CP0416	155
CP0418	109
CP0420	109
CP0422	134
CP0424	170
CP0426	138
CP0428	138
CP0430	146
CP0432	149
CP0434	146
CP0436	149
CP0438	42
CP0440	151
CP0442	171
CP0444	185
CP0446	185
CP0448	186
CP0450	185
CP0452	186
CP0454	186
CP0458	188
CP0460	189
CP0462	189
CP0464	189
CP0466	190
CP0468	190
CP0472	176
CP0474	176

CODICE	PAGINA
CP0476	176
CP0478	194
CP0480	196
CP0482	196
CP0484	194
CP0488	193
CP0492	192
CP0494	198
CP0496	198
CP0498	198
CP0500	161
CP0502	165
CP0504	160
CP0506	162
CP0508	163
CP0510	160
CP0512	160
CP0514	172
CP0516	164
CP0518	142
CP0520	142
CP0522	142
CP0524	158
CP0526	158
CP0528	202
CP0530	205
CP0532	205
CP0534	205
CP0536	206
CP0538	206
CP0540	209
CP0542	209
CP0544	213
CP0546	202
CP0548	202
CP0550	211
CP0552	210
CP0554	211
CP0556	213
CP0558	219
CP0560	217
CP0562	217
CP0564	224
CP0566	217
CP0568	216
CP0570	223
CP0572	226
CP0574	227
CP0576	223
CP0578	221
CP0580	221
CP0582	221
CP0584	221
CP0586	223
CP0588	223
CP0590	224
CP0592	224
CP0594	224
CP0596	219

Adria art s.r.l.
Tiene a precisare che i modelli presenti in foto potrebbero subire, in fase di realizzazione, modifiche a scopo migliorativo. Alcuni articoli presenti in questo catalogo possono uscire di produzione senza preavviso, secondo le esigenze dell'azienda.

Adria art s.r.l.
Declina ogni responsabilità per danni causati da una errata installazione dei propri prodotti.

*Adria art s.r.l.
Reserves the right, without prior notice, to change specifications on the products showed in this catalogue.*

*Adria art s.r.l.
Declines any responsibility for damages which may occur to wrong installation of products.*

IMMAGINE E RICERCA: ADRIA ART SRL
PROGETTO GRAFICO: alkimiacreativa.com
STAMPA: LITOS SRL



PINTDECOR®
wallpaper
made in italy

www.pintdecorwallpaper.it

Pintdecor è un marchio registrato da
Pintdecor is a registered trademark from
Adria Art srl via Luigi Galvani 7/a
47832 San Clemente (RN) Italy
Ph: +39 0541 659186 - Fax: +39 0541 658186
commitalia@adria-art.com - export@adria-art.com